

الخطوط الساخنة

1760 (الصليب الأحمر)
1787 (وزارة الصحة)

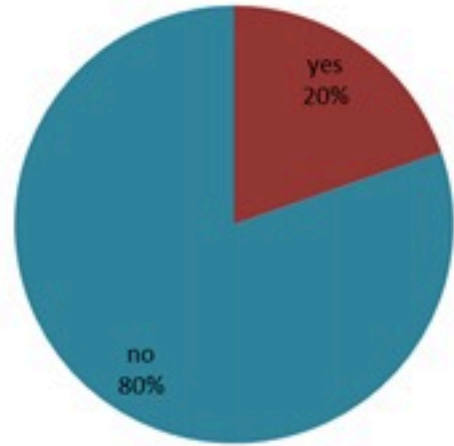
ترصد الكوليرا في لبنان 27 تشرين الثاني 2022

الجمهورية اللبنانية
وزارة الصحة العامة
برنامج الترصد الوبائي

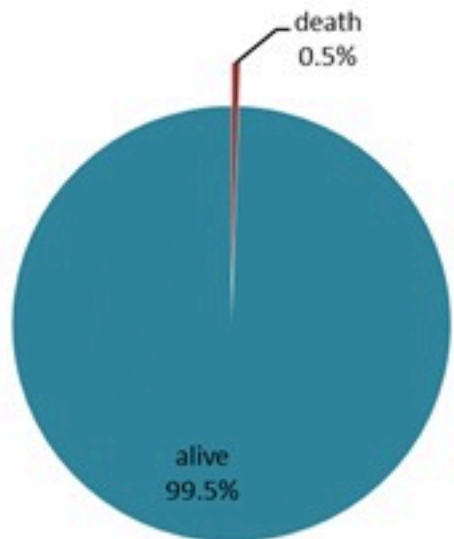


حملة التلقيح ضد الكوليرا العدد التراكمي للجرعات لتاريخ أمس

اليوم أمس	التراكمي (بعد التصحيح)
13,646	405,312



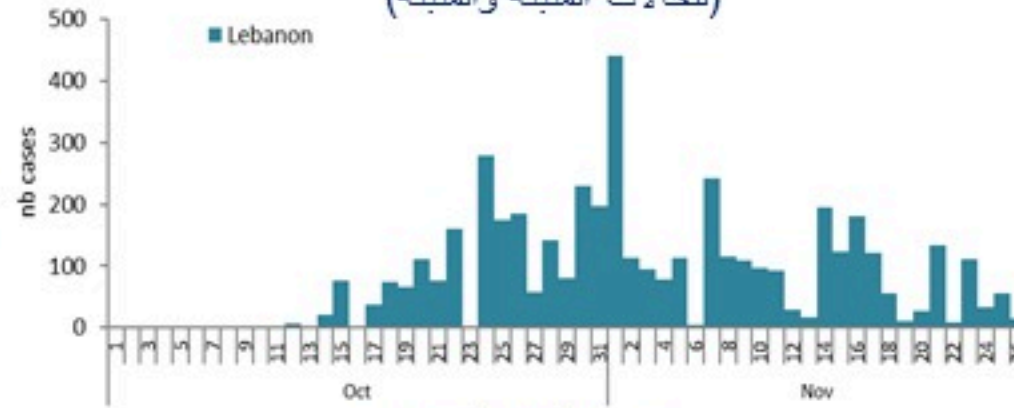
حسب الاستشفاء
(المشبهة والمتبنة)



حسب تطور
الحالة
(المشبهة والمتبنة)

الوفيات (المتبنة)		الحالات المثبتة		كافة الحالات المشبهة والمتبنة	
التراكمي	الجديدة (آخر 24 ساعة)	التراكمي	الجديدة (آخر 24 ساعة)	التراكمي	الجديدة (آخر 24 ساعة)
20	0	601	1	4404	15

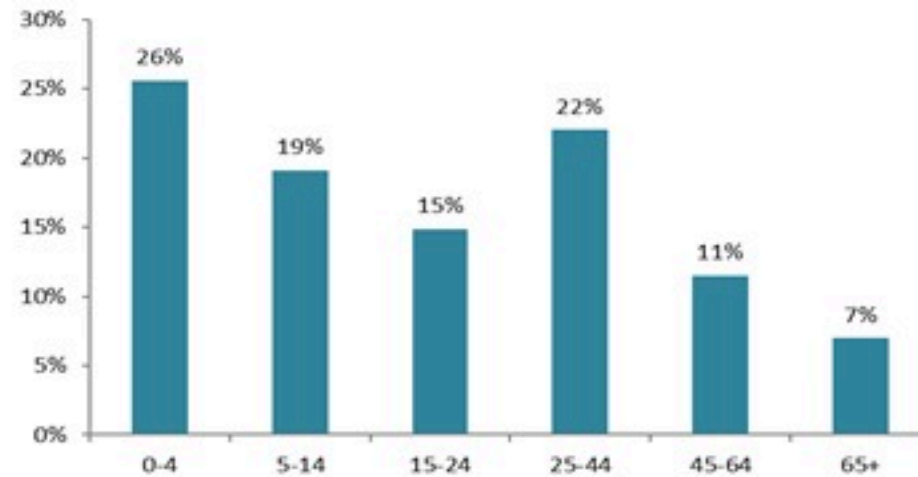
حسب تاريخ الإبلاغ
(للحالات المثبتة والمتبنة)



استعمال الاسرة الاستشفائية
(للحالات المثبتة والمتبنة)



حسب الفئة العمرية
(للحالات المشبهة والمتبنة)



حسب البلدة
(للحالات المثبتة)



Cholera Surveillance Report

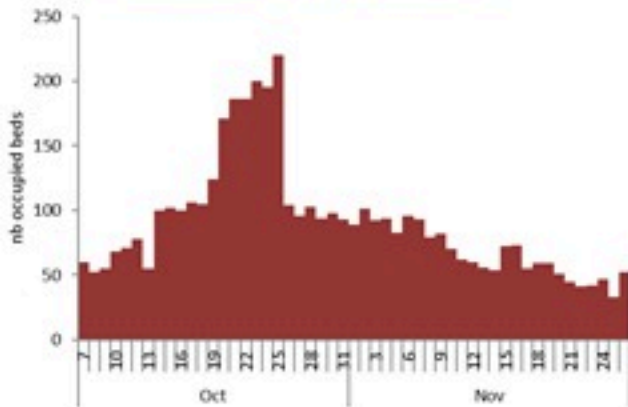
27 Nov 2022

Call Centers
 1760 (Red Cross)
 1787 (MOPH)

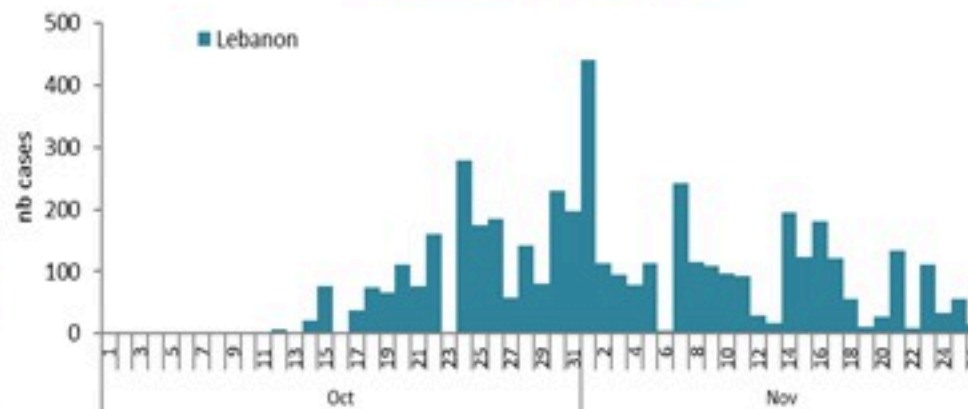
All cases (suspected and confirmed)		Confirmed Cases		Deaths (confirmed)	
New (past 24 h)	Cumulative	New (past 24 h)	Cumulative	New	Cumulative
15	4404	1	601	0	20

Cholera Vaccination Campaign (Cumulative of delivered doses up to past day)	
Past day	Cumulative (corrected)
13,646	405,312

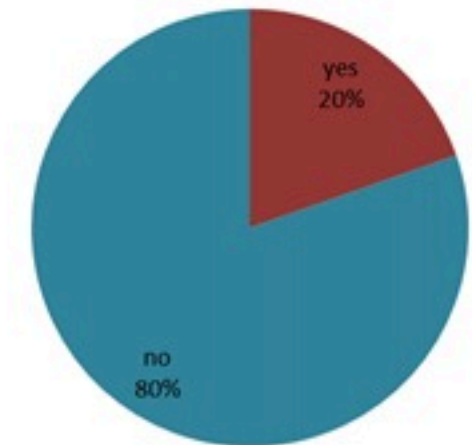
Occupied hospital beds
(suspected and confirmed)



By date of report
(suspected and confirmed)



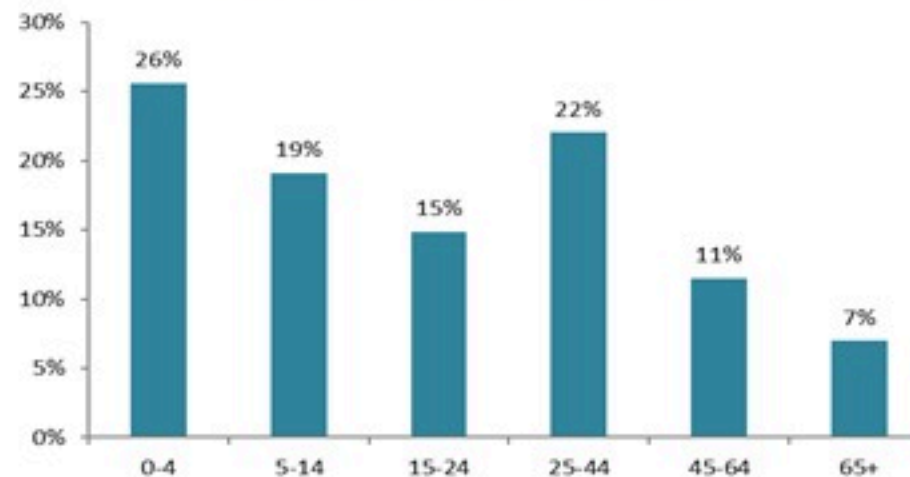
By Hospital Admission
(suspected and confirmed)



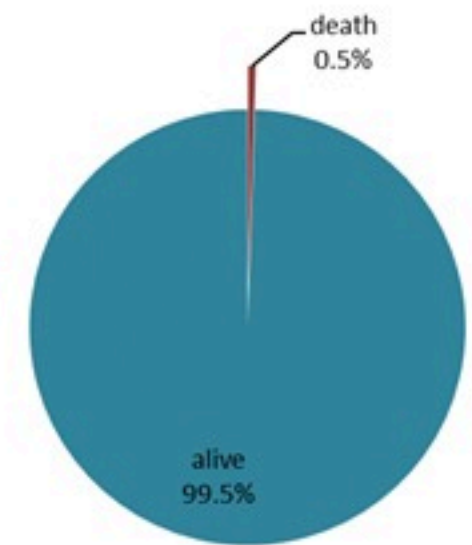
By locality (confirmed cases)



By age group
(suspected and confirmed cases)



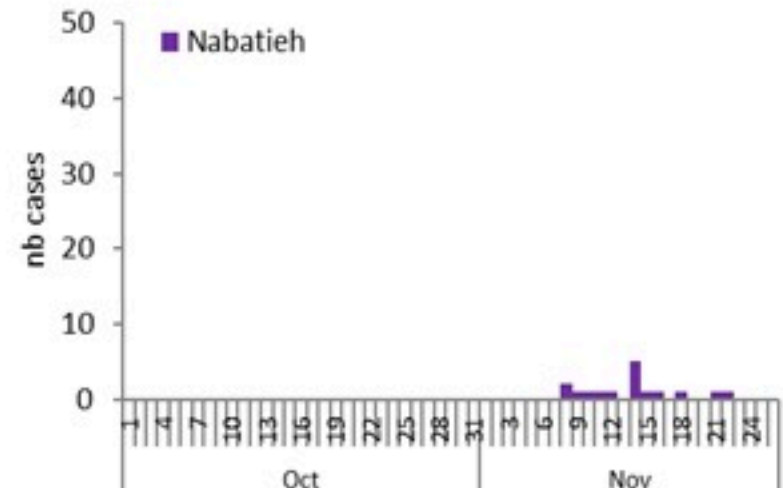
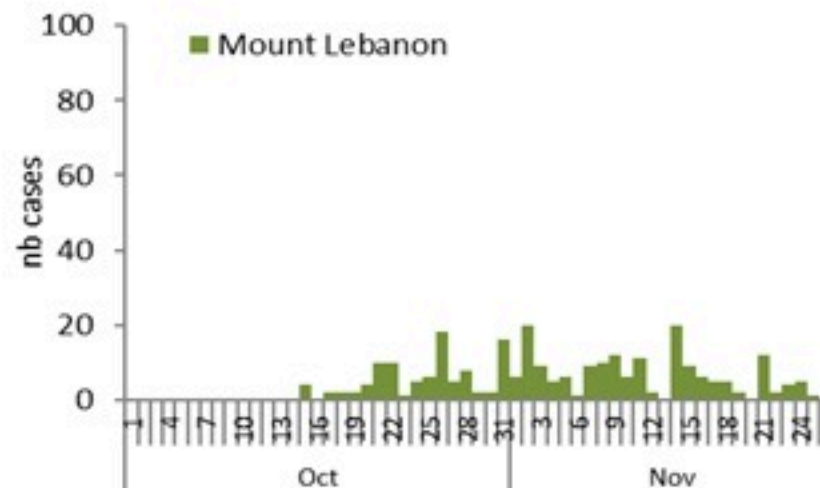
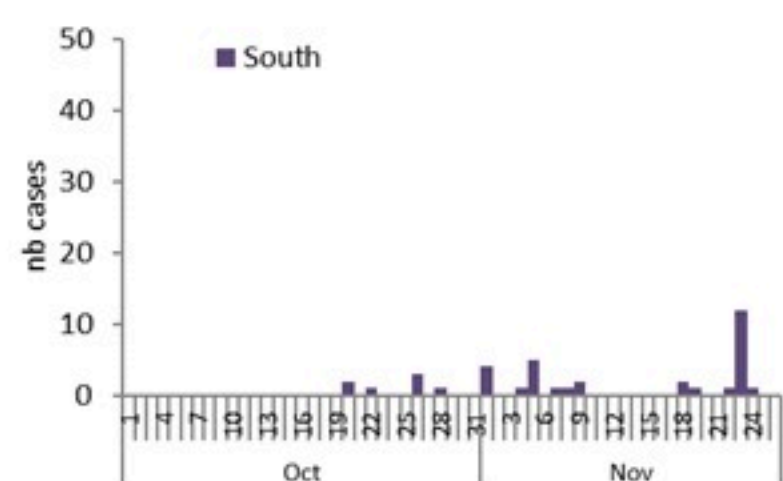
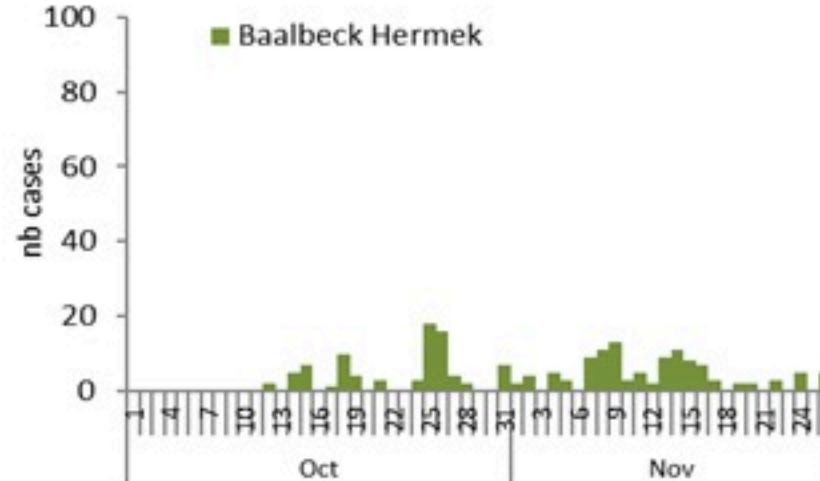
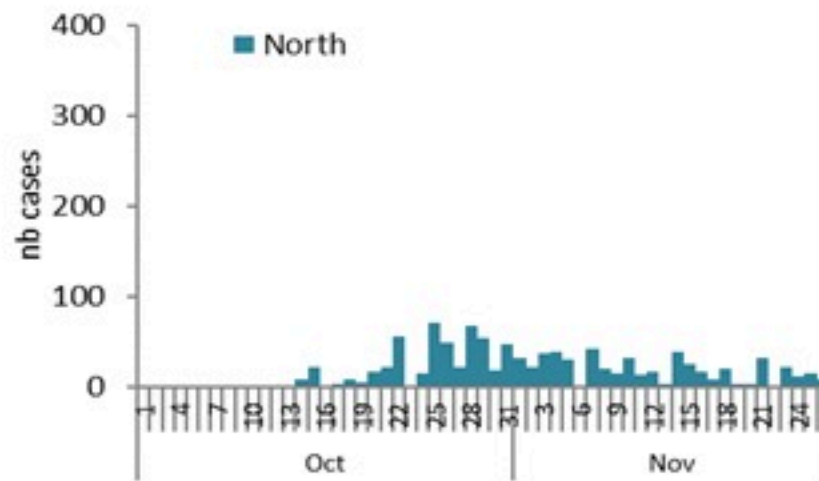
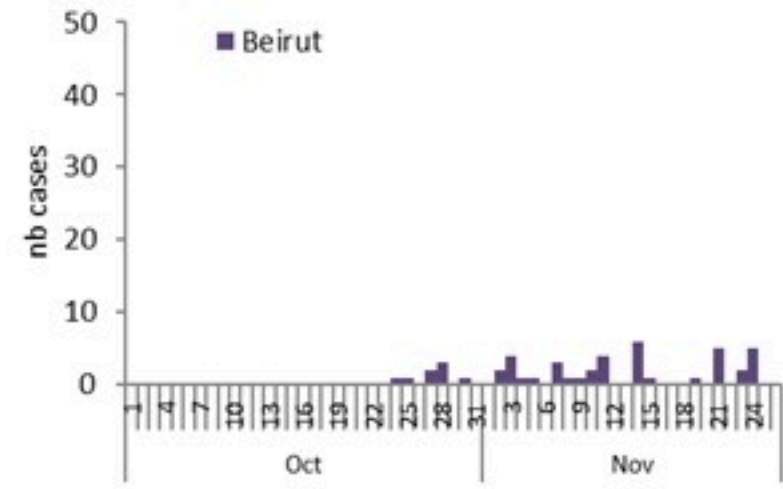
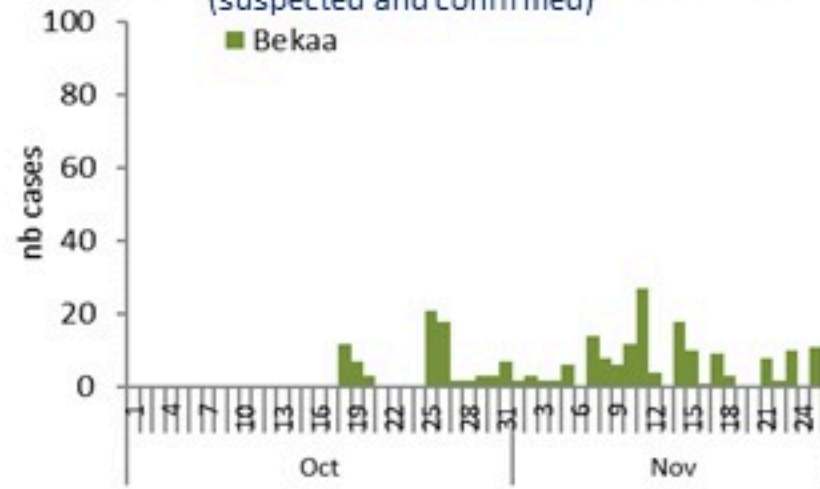
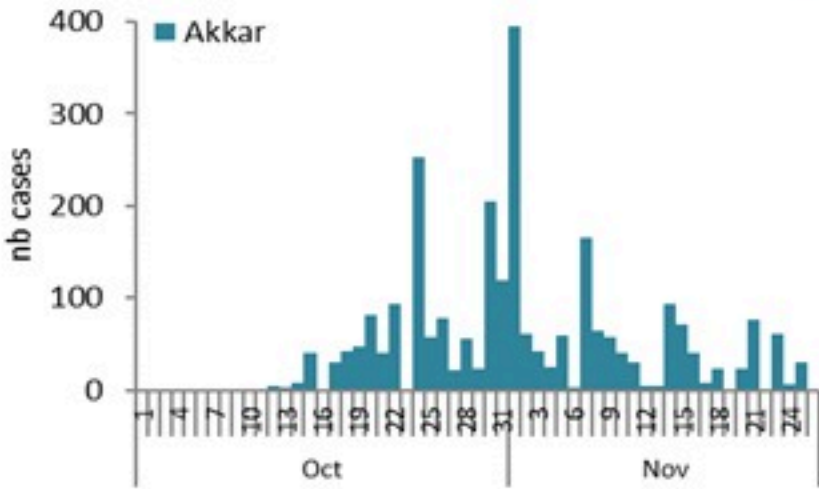
By Outcome
(suspected and confirmed)



Cholera Surveillance Report

27 Nov 2022

Epicurves by date of reporting by province (suspected and confirmed)



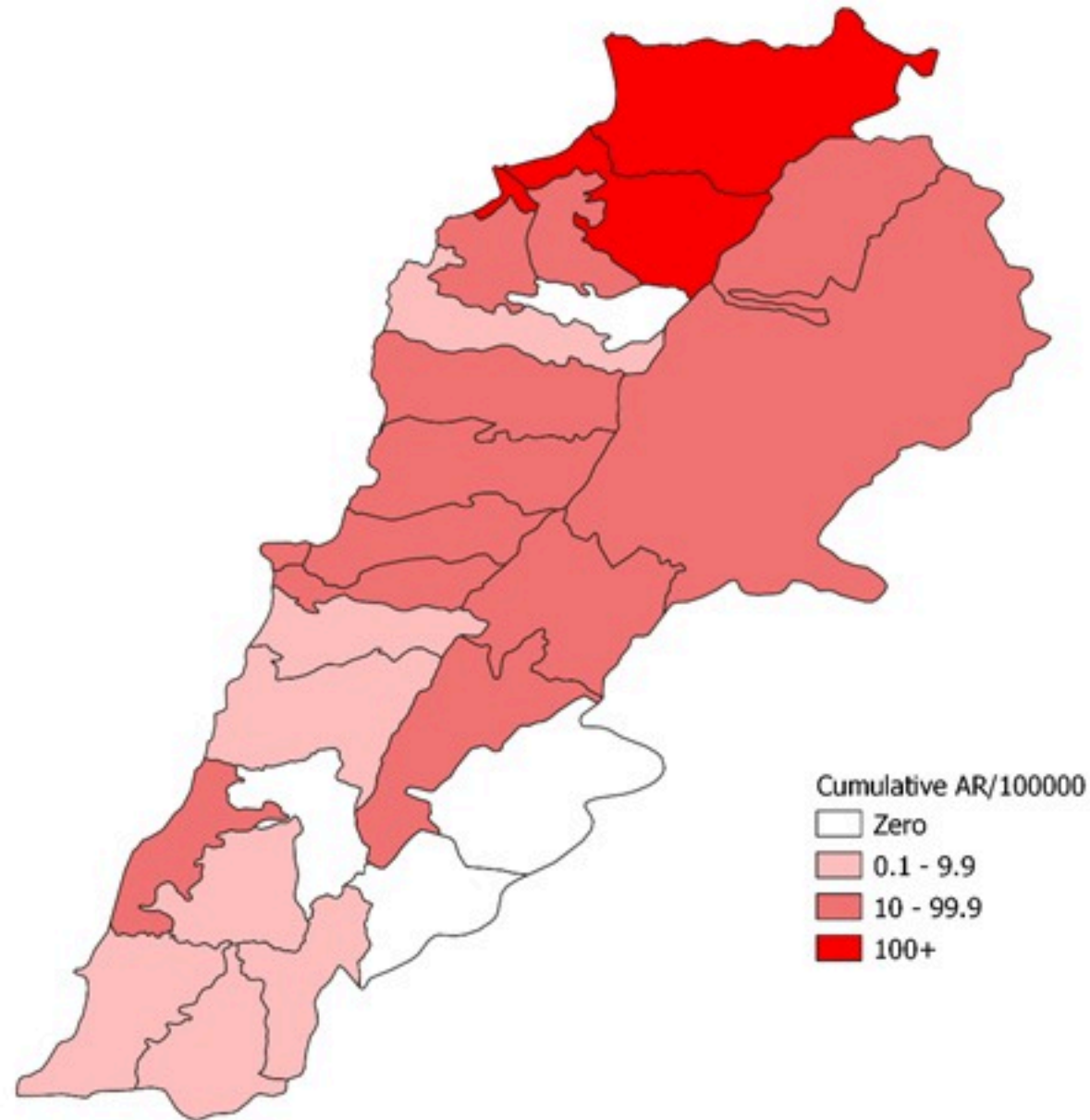
Cholera Surveillance Update

27 Nov 2022

4

Cumulative Attack Rate per 100,000 (suspected and confirmed)

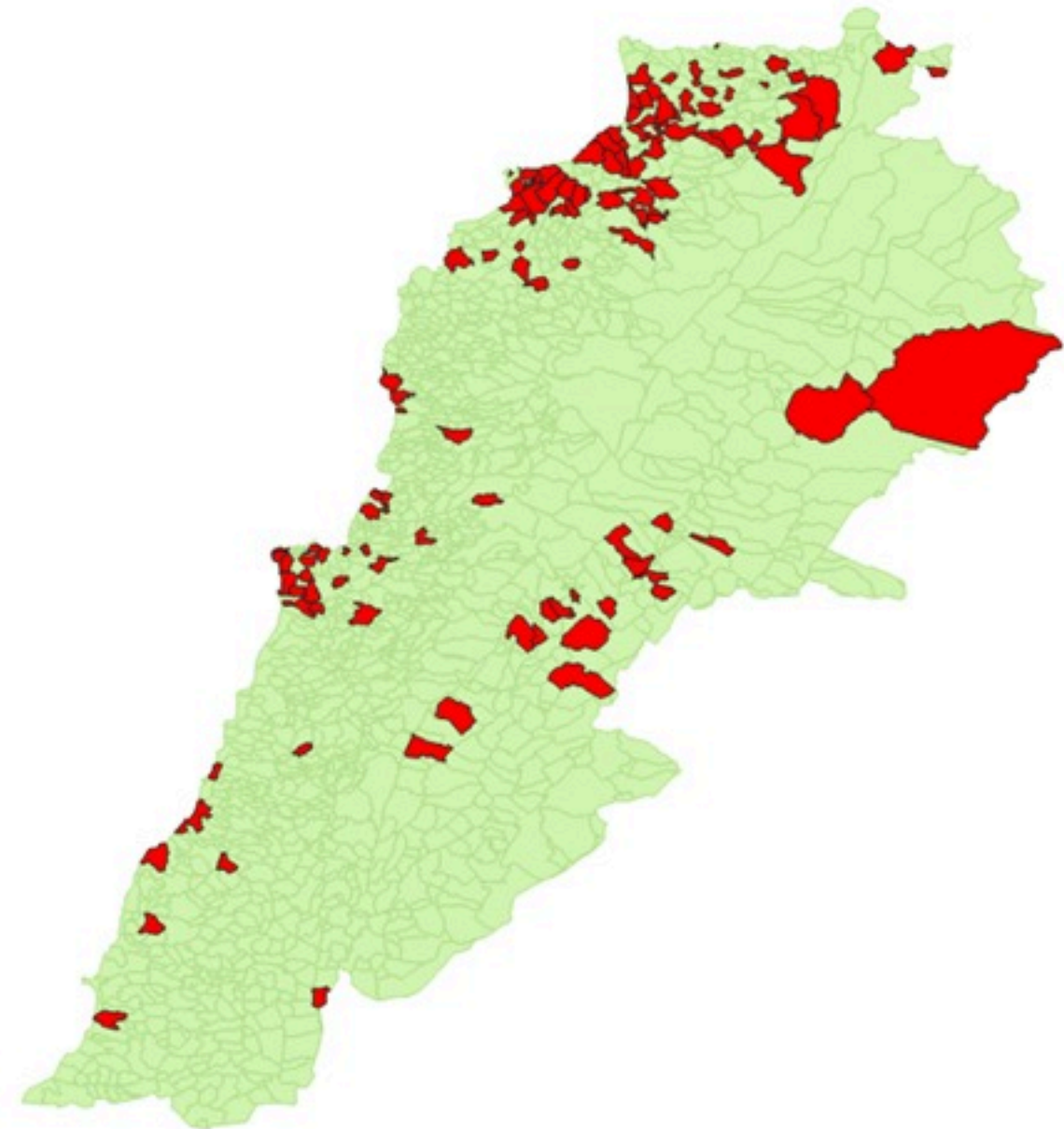
نسبة الحدوث التراكمية لكل مئة ألف نسمة (الحالات المشتبهية والمثبتة)



Cholera Surveillance Update

27 Nov 2022

By locality (confirmed)
 حسب البلدة (المتبئة)



Caza	Locality	Cases	Caza	Locality	Cases
Akkar	Akkar Atika	1	Kesrwan	Aintoura	1
	Amayer/Quadi Khaled	1		Bqaatouta	7
	Arqa / Marlayet Haddara	2		Gihazir	2
	Bebnine / Baddoua	146		Jounieh Ghadir	4
	Belt Hajj/Koucha/Khreibit Jindi	3		Jounieh Sarba	4
	Berqayel	6		Yahdouch	1
	Bezbina	1		Zouk Mosbeh	3
	Birch	1	Koura	Aaba	1
	Bqerzia	1		Aafsdliq	1
	Chelkh Ayache / Chir Hmalrine	3		Barsa	1
	Dahr Qambar /Hokr Qatteh	2		Dahr Ain / Ras Masqua	1
	Fneydek	1		Rehdibbine	1
	Halba	1		Kfar Aqa	1
	Hayssa	1	Marjeoun	Aadaysseh	1
	Hoculch	3	Metn	Biktaya	1
	Jdeidat Qaytee	3		Broummana	1
	Kfar Harra	4		Bsalim	1
	Kfar Melki	1		Daoura/Borj Hammoud	2
	Khirbet Char	2		Mansourieh	3
	Kneisset Hnaldar	1		Zalqa	1
	Kouadhra	1	Minieh Danieh	Aadous	1
	Koueikhat	2		Assoun	4
	Machha	2		Ain El Tineh	1
	Majdala	2		Bahsa	1
	Memneaa	1		Bakhaaoun	4
	Mhamarah / Nahr Bared / Abdeh	13		Bhanine / Zouk Bhanine	7
	Minlara	3		Btermaz	2
	Mqyatea	1		Douralya	1
	Quadi Jamous	8		Kfar Chellane	2
	Qaabrine / Tal Hayat	7		Kfar Habou	1
	Qbalyat	1		Merkebta	2
	Qlayat Akkar	2		Minieh	18
	Qobet Chamra	16		Qoutlyeh	1
	Rahbeh	1		Qattine	3
	Randiyeh / Deir Dalloum	1		Rihanieh	35
	Saadine	4		Sir Dannieh	5
	Tell Abbas Charqui	1	Salda	Ghazieh	2
	Tieil	1		Kharayeb	3
	Zouq Haddara	1		Salda	1
	Zouq Hosnieh	3		Sarafand	1
Aley	Aley	1	Sour	Deir Qanoun Ain	4
	Hay Selloum/Chouifat	1		Baddawi	16
Baabda	Ain Roummaneh	1		Mina	7
	Borj Brajneh	3		Qobbah	20
	Ghbayreh/Chiyah/Sabra	2		Tripoli Bab Raml	1
	Hadath	3		Tripoli Gardens	1
	Kfar Chima	1		Tripoli Haddadine	1
	Mreijih	1		Tripoli Nouri	1
Baalbeck	Arsal	27		Tripoli Souayqa / Jlsrain	3
	Kfar Dabache	2		Tripoli Tabbaneh	20
	Khodr	2		Tripoli Zeitoun	4
	Temnine Faouqa	1	West Beqaa	Kefraya	1
	Temnine Tahta	9		Saghbine	1
	Younine	1	Zahleh	Aali Nahri	2
Batroun	Chikka	1		Bar Elias	2
Beirut	Achrafieh	2		Dalhamieh	1
	Ain Mraissseh	1		Haouch Mandra	1
	Hamra	1		Hawch Omara	7
	Mdaouar / Mar Mikhael	1		Majdal Anjar	1
	Msaitbeh	1		Qob Elias	9
Chouf	Zaarouriyeh	1		Raalit	8
Jbeil	Amchit	1		Saadnayel	11
	Ehmej	1		Taalabaya	2
	Jbeil	1		Zahleh Maalaka	2
	Mastita	2	Zghorta	Aalima	1
				Ardeh	1
				Kfar Dlaqous	2
				Mejdalya Zghorta	6
				Miriata / Faour	3
				Sebaal	1
				Zghorta	4

Figures in table are subject to modification following updates and data correction