

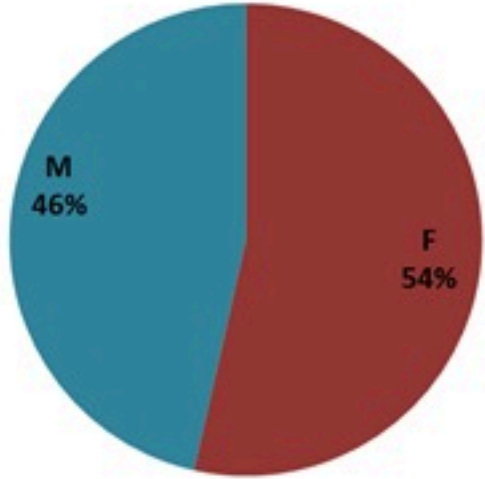
ترصد الكوليرا في لبنان 28 اذار 2023

الجمهورية اللبنانية
وزارة الصحة العامة
برنامج الترصد الوبائي



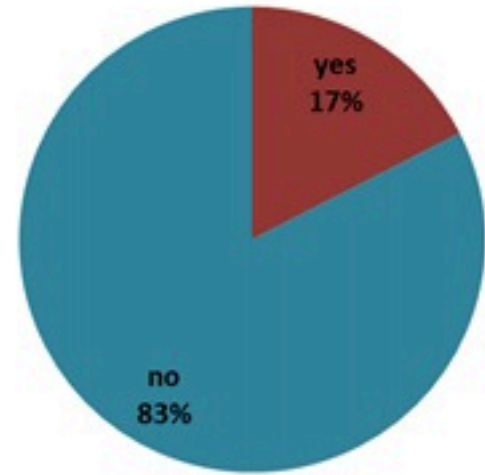
الخطوط الساخنة

1760 (الصليب الأحمر)
1787 (وزارة الصحة)



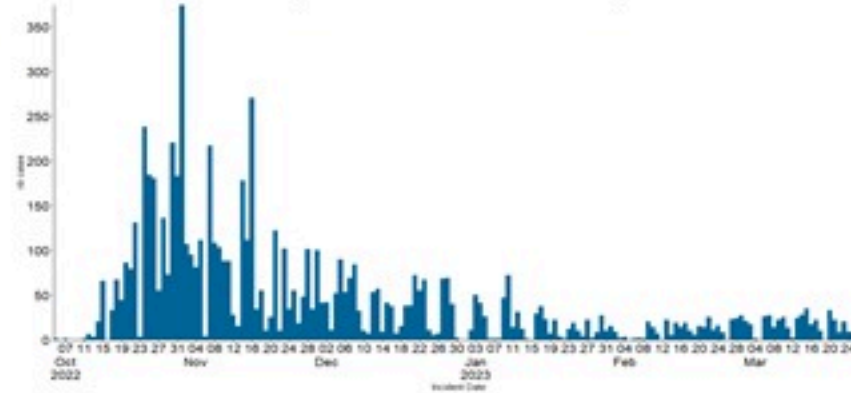
حسب الجنس
(المشبهة والمتبنة)

الوفيات (المتبنة)		الحالات المثبتة		كافة الحالات المشبهة والمتبنة	
التراكمي	الجديدة (آخر 24 ساعة)	التراكمي	الجديدة (آخر 24 ساعة)	التراكمي	الجديدة (آخر 24 ساعة)
23	0	671	0	7149	24

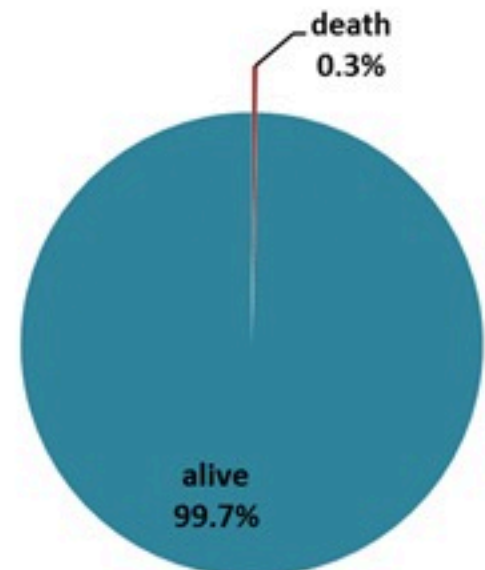
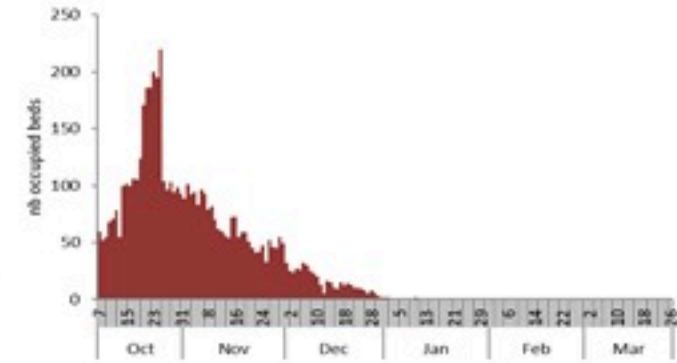


حسب الاستشفاء
(المشبهة والمتبنة)

حسب تاريخ الإبلاغ
(للحالات المثبتة والمتبنة)

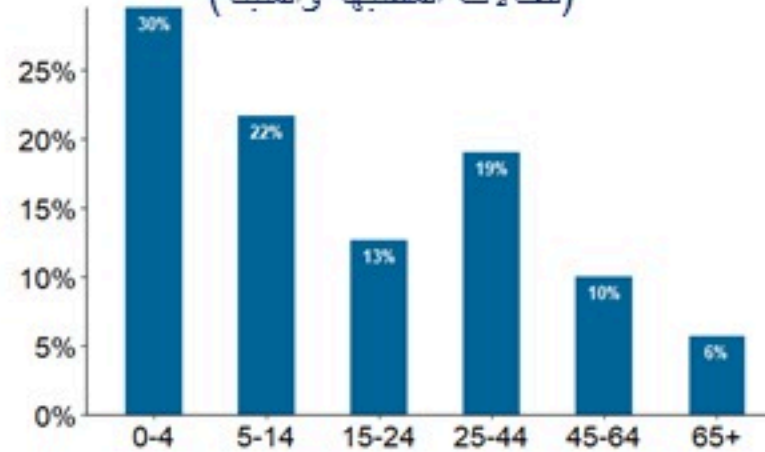


استعمال الاسرة الاستشفائية
(للحالات المثبتة والمتبنة)



حسب تطور
الحالة
(المشبهة والمتبنة)

حسب الفئة العمرية
(للحالات المشبهة والمتبنة)



حسب البلدة
(للحالات المثبتة)



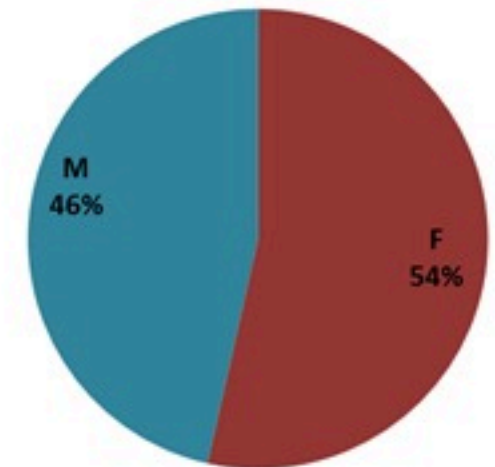
Cholera Surveillance Report

28 Mar 2023

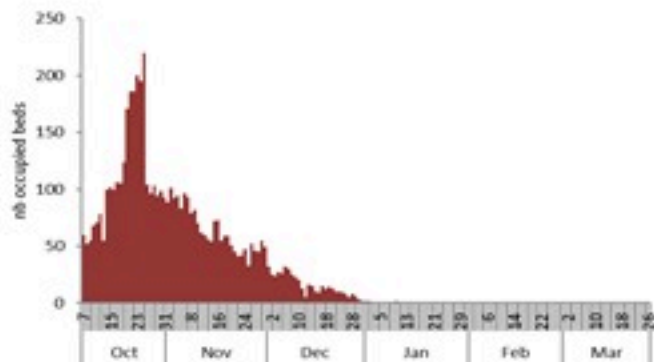
Call Centers
 1760 (Red Cross)
 1787 (MOPH)

All cases (suspected and confirmed)		Confirmed Cases		Deaths (confirmed)	
New (past 24 h)	Cumulative	New (past 24 h)	Cumulative	New	Cumulative
24	7149	0	671	0	23

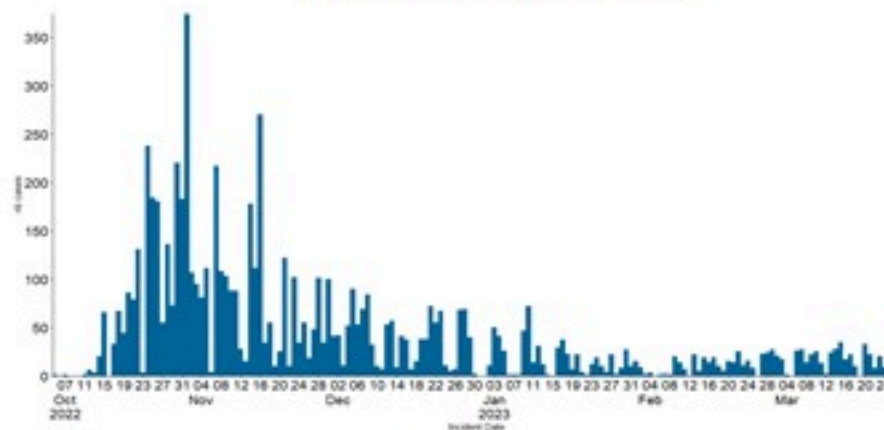
By Sex
(suspected and confirmed)



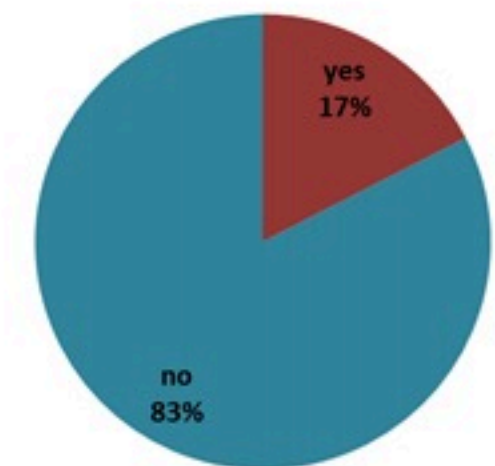
Occupied hospital beds
(suspected and confirmed)



By date of report
(suspected and confirmed)



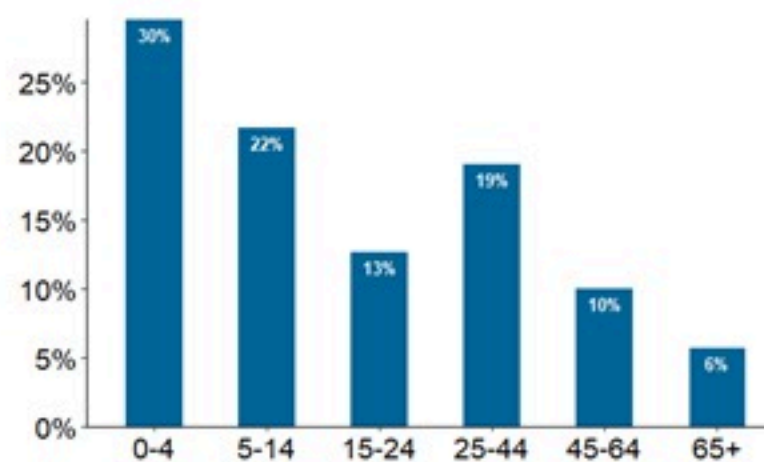
By Hospital Admission
(suspected and confirmed)



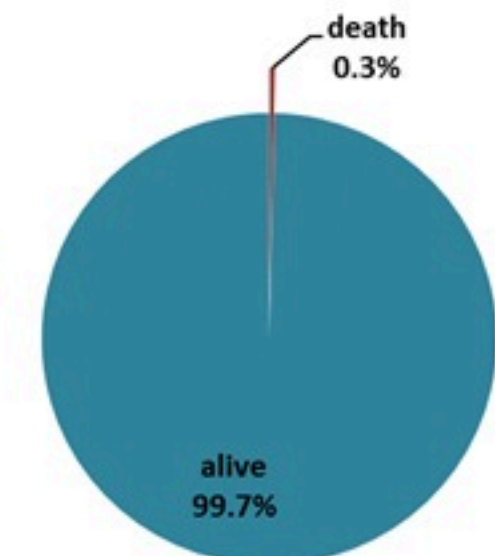
By locality (confirmed cases)



By age group
(suspected and confirmed cases)



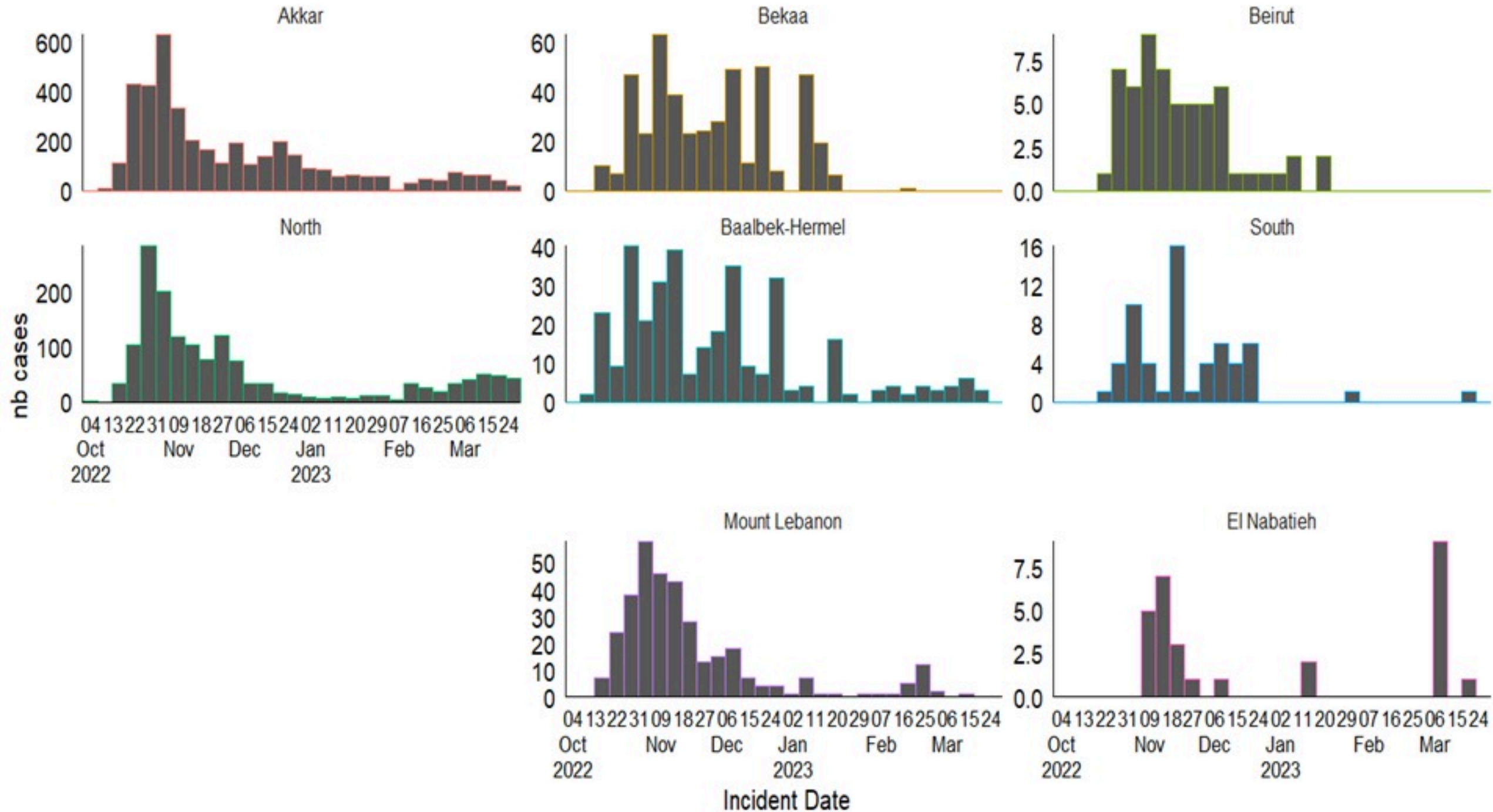
By Outcome
(suspected and confirmed)



Cholera Surveillance Report

28 Mar 2023

Epicurves by date of reporting by province
(suspected and confirmed)

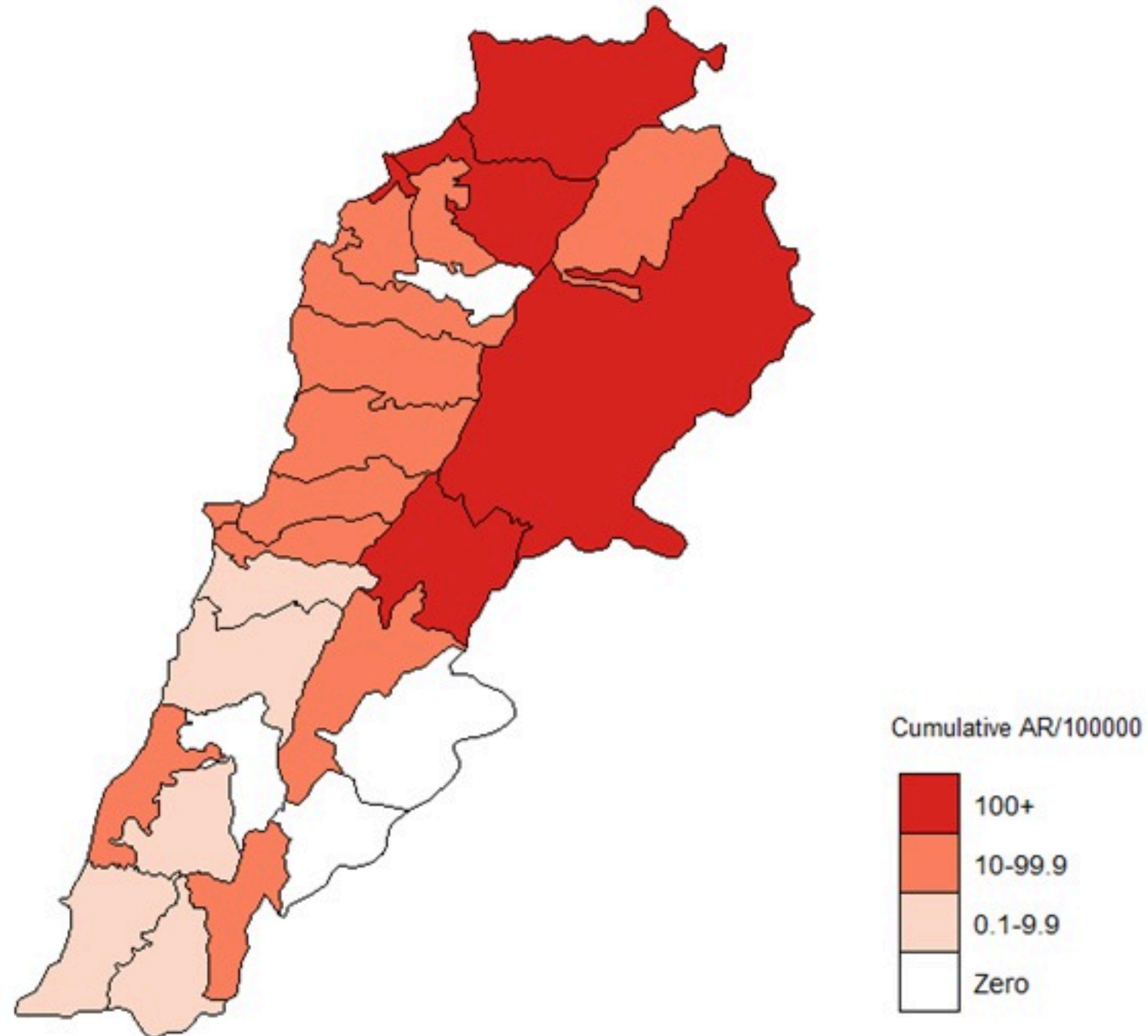


Cholera Surveillance Update

28 Mar 2023

Cumulative Attack Rate per 100,000 (suspected and confirmed)

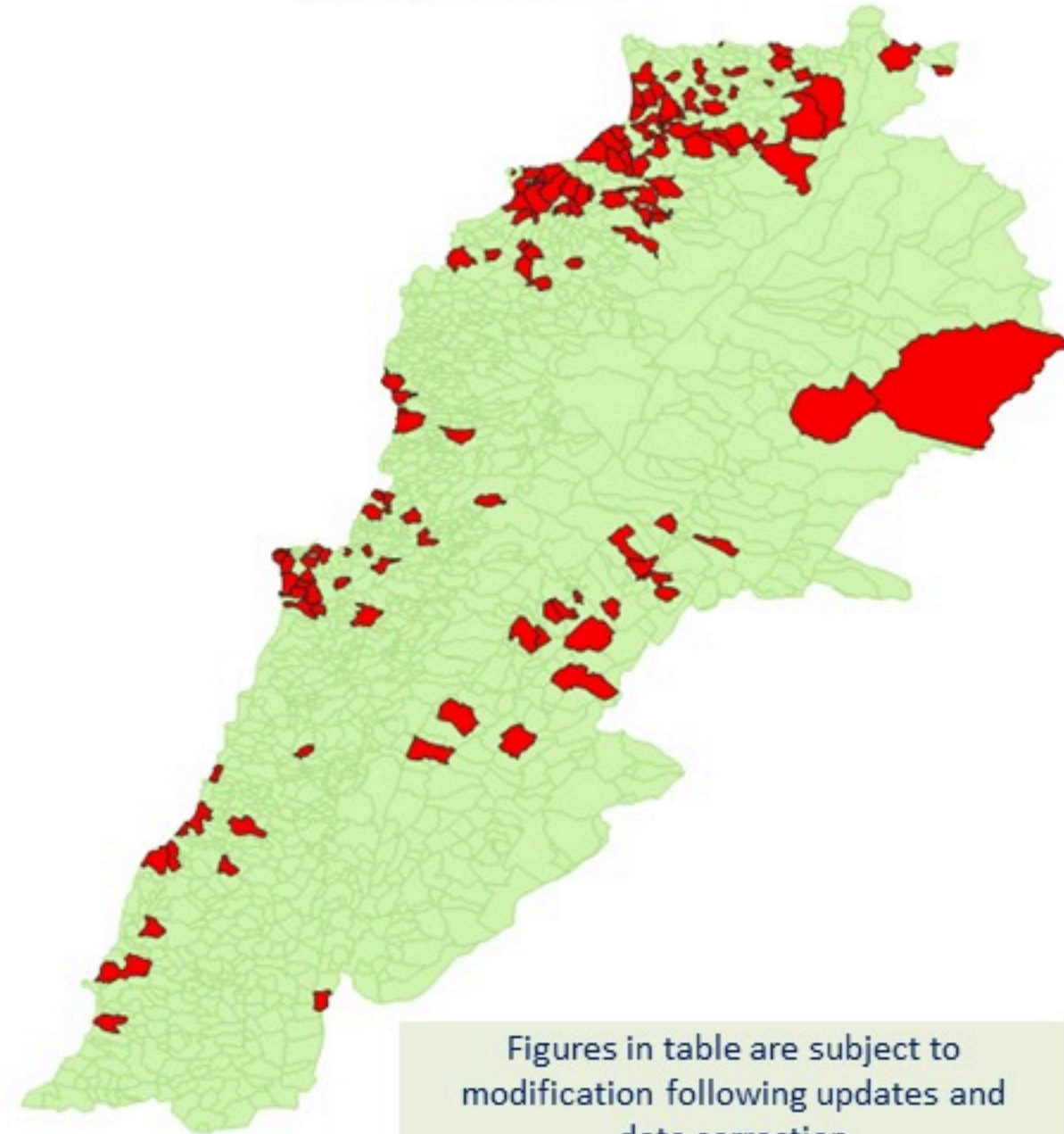
نسبة الحدوث التراكمية لكل مئة الف نسمة (الحالات المشتبهه والمثبتة)



Cholera Surveillance Update

28 Mar 2023

By locality (confirmed)
حسب البلدة (المتبئة)



Figures in table are subject to modification following updates and data correction

Caza	Locality	cases	Caza	Locality	cases	
Akkar	Akkar Atika	1	Koura	Aintouna	1	
	Amayer/Quadi Khaled	1		Balfounh	1	
	Arqa / Marlayet Haddara	2		Bqawtula	7	
	Bebnine / Baddoua	16		Ghair	2	
	Beit Hajj/Koucha/Khreibit Jindi	1		Jounieh Ghadir	4	
	Bergayel	1		Jounieh Sabra	4	
	Bezbina	1		Yahchouch	1	
	Birch	1		Zouk Mosbeh	3	
	Bqerzia	1		Koura	Aaba	1
	Cheikh Ayache / Chir Hmairine	1			Aufdiq	1
	Dahr Qambar /Hokr Qatteh	1	Basa		1	
	Dabadab	1	Bsama		1	
	Dinbou	1	Dahr Ain / Ras Masqua		1	
	Fneydek	1	Rachdibbine		1	
	Halba	1	Kfar Aqa		1	
	Hayssa	1	Aadayssah		1	
	Hocouich	1	Marjoun		Biklaya	1
	Jdeidat Qaytee	1			Broummata	1
	Kfar Harra	4		Bsalim	1	
	Kfar Melki	1		Daruna/Borj Hammoud	2	
	Khane Hayat	1		Mansourieh	3	
	Khirbet Char	1		Zalqa	1	
	Kneisset Hnaldar	1		Miniyah Danieh	Aadoua	1
	Kouachra	1			Assoun	4
	Koukikhat	1			Ain El Timh	1
	Machha	1			Bahsa	1
	Majdala	1	Bakhaoum		4	
	Memneaa	1	Bhanine / Zouk Bhanine		7	
	Mhamarah / Nahr Bared / Abdeh	22	Btamar		6	
	Minlara	1	Douniya		1	
	Mqyatea	1	Kfar Chollane		2	
	Ouadi Jamous	11	Kfar Habou		1	
Qaabrine / Tal Hayat	1	Makubta	2			
Qbalyat	1	Miniyah	Miniyah	18		
Qlayat Akkar	1		Qouatiyeh	1		
Qobet Chamra	17		Qatime	3		
Rahbeh	1		Rihanieh	35		
Ransiyeh / Deir Dalloum	1		Sir Daniieh	5		
Saadine	4		Sidon	Aanqoun	1	
Tell Abbas Charqui	1			Bissariyeh	4	
Tieil	1			Ghazieh	2	
Zouq Haddara	1			Khawayeb	3	
Zouq Hosnieh	1			Saida	1	
Aley	Aley	1		Sawfand	1	
	Hay Selloum/Chouifat	1		Sour	Abbasiyeh	1
Baabda	Ain Roumanneh	1			Deir Qaroun Ain	4
	Borj Brajneeh	3		Tripoli	Badawi	16
	Ghbayroh/Chiyah/Sabra	2			Mina	7
	Hadath	1	Qobbah		21	
	Haret Hireik	1	Tripoli Bab Raml		1	
	Kfar Chima	1	Tripoli Gardans		2	
Mrejijh	2	Tripoli Haddadine	1			
Baalbeck	Arsal	27	Tripoli Nouri		1	
	Kfar Dabache	1	Tripoli Souayqa / Jsrain		3	
	Khodr	1	Tripoli Tabbaneh		21	
	Temnine Faouqa	1	Tripoli Zaitoun		15	
	Temnine Tahta	1	West Beqaa	Kamel Jaruz	1	
Younine	1	Kufaya		1		
Batroun	Chikka	1		Saghbine	1	
	Achrafieh	1		Zahrh	Aali Nahri	2
Beirut	Ain Miralssch	1			Bar Elias	2
	Hamra	1			Dalhamieh	2
	Mdaour / Mar Mikhael	1			Harouch Mandra	1
	Msaitebch	1			Hawch Omara	7
	Chouf	Zaarouriyeh			1	Majdal Anjar
Jbeil		Amchit			1	Qob Elias
		Ehmej	1		Raait	11
		Fidar	1		Saadinayd	11
		Halate	1		Talabaya	2
	Jbeil	1	Zahrh Madaka	2		
Mastita	1	Zghorta	Aalma	1		
Koura	Andeh		1	Kfar Dhaqous	2	
	Kfar Dhaqous		2	Majdalya Zghorta	7	
	Majdalya Zghorta		7	Mirata / Fozur	3	
	Mirata / Fozur		3	Sabaa	1	
	Sabaa	1	Zghorta	5		
Zghorta	Zghorta	5				

Cholera weekly incidence rate/100,000

