

# ترصد الكوليرا في لبنان 29 أيار 2023

الجمهورية اللبنانية  
وزارة الصحة العامة  
برنامج الترصد الوبائي

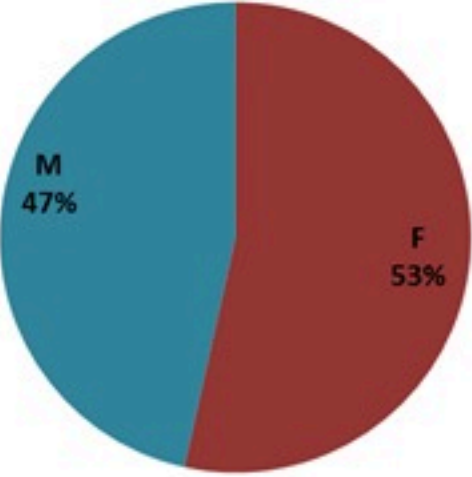


## الخطوط الساخنة

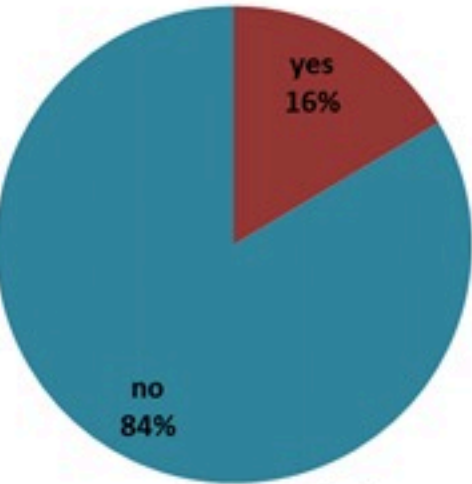
1760 (الصليب الأحمر)  
1787 (وزارة الصحة)

الوفيات (المتبنة)		الحالات المتبنة		كافة الحالات المتبنة والمتبنة	
التراكمي	الجديدة (آخر 24 ساعة)	التراكمي	الجديدة (آخر 24 ساعة)	التراكمي	الجديدة (آخر 24 ساعة)
23	0	671	0	7916	0

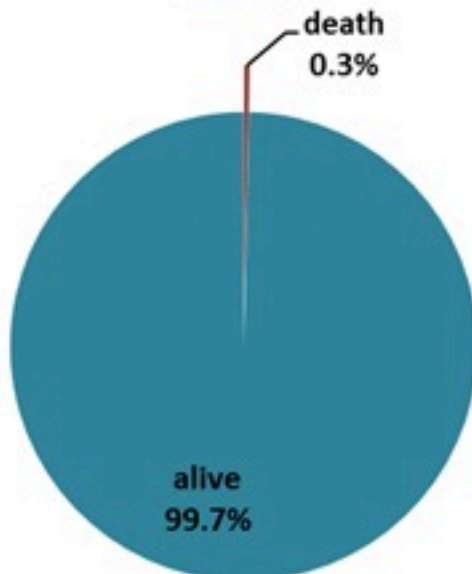
حسب الجنس  
(المتبنة والمتبنة)



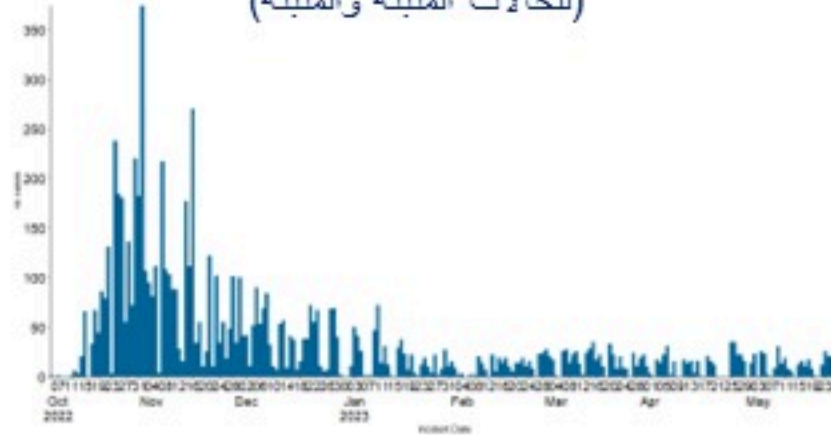
حسب الاستشفاء  
(المتبنة والمتبنة)



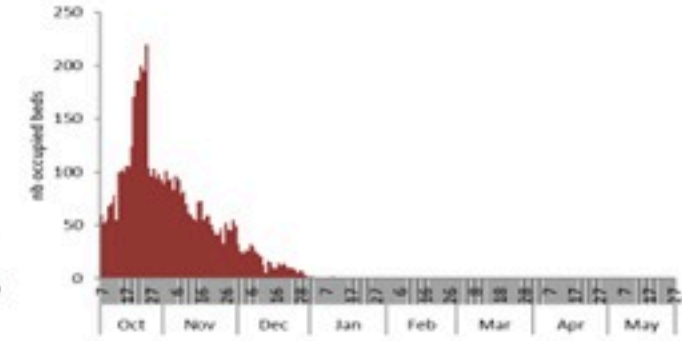
حسب تطور  
الحالة  
(المتبنة والمتبنة)



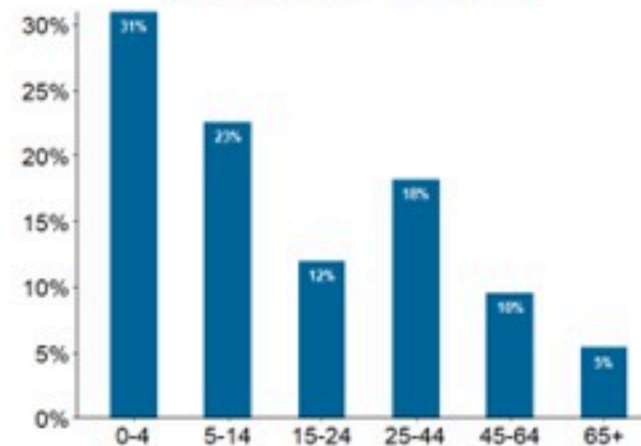
حسب تاريخ الإبلاغ  
(للحالات المتبنة والمتبنة)



استعمال الاسرة الاستشفائية  
(للحالات المتبنة والمتبنة)



حسب الفئة العمرية  
(للحالات المتبنة والمتبنة)



حسب البلدة  
(للحالات المتبنة)



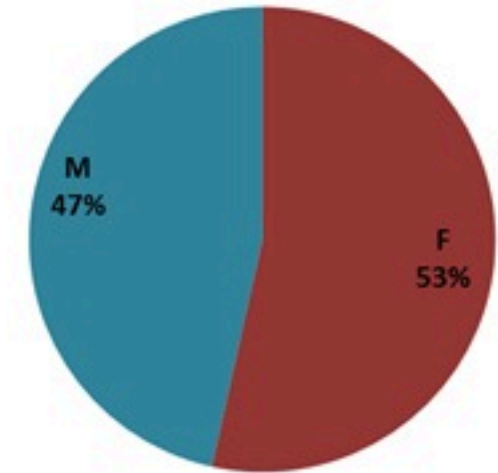
# Cholera Surveillance Report

## 29 May 2023

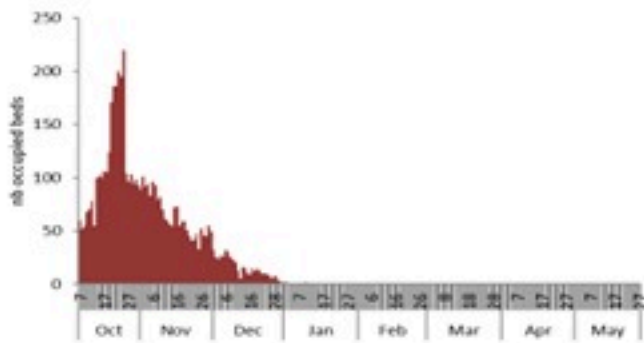
**Call Centers**  
 1760 (Red Cross)  
 1787 (MOPH)

All cases (suspected and confirmed)		Confirmed Cases		Deaths (confirmed)	
New (past 24 h)	Cumulative	New (past 24 h)	Cumulative	New	Cumulative
<b>0</b>	<b>7916</b>	<b>0</b>	<b>671</b>	<b>0</b>	<b>23</b>

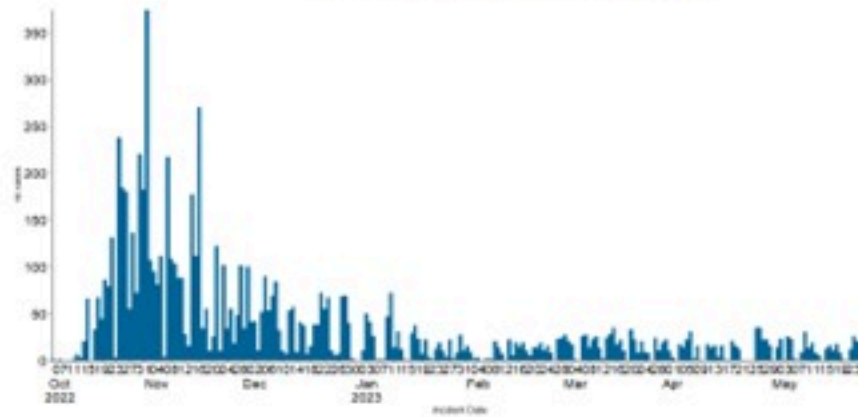
By Sex  
(suspected and confirmed)



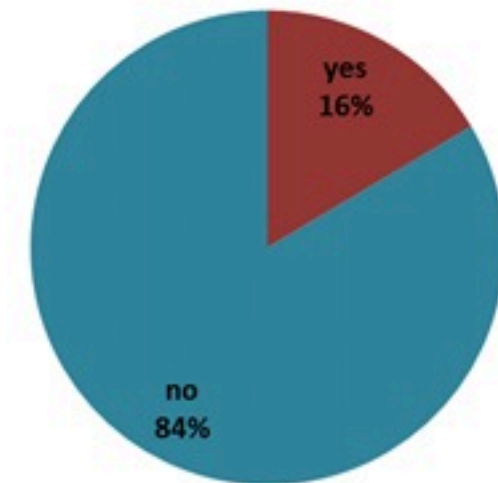
Occupied hospital beds  
(suspected and confirmed)



By date of report  
(suspected and confirmed)



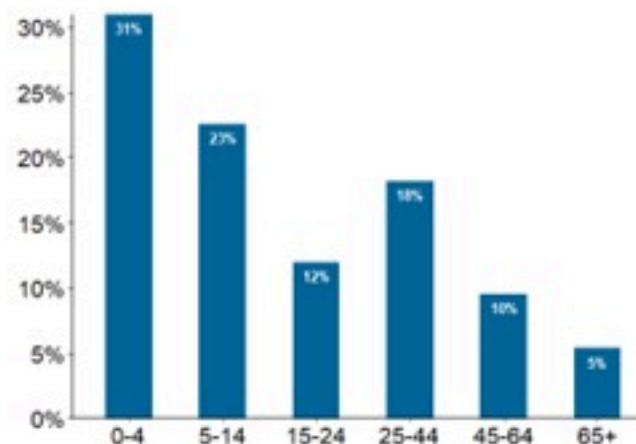
By Hospital Admission  
(suspected and confirmed)



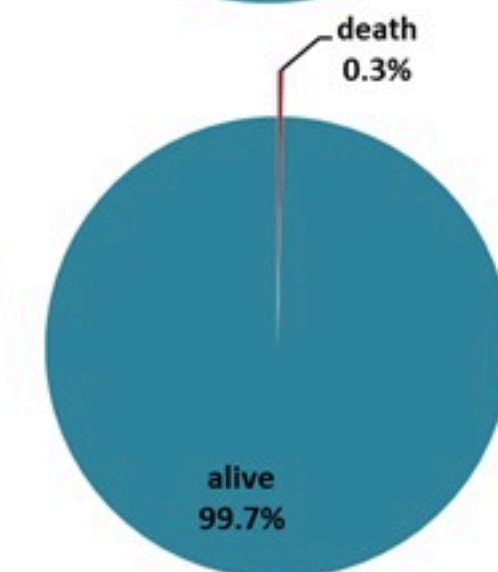
By locality (confirmed cases)



By age group  
(suspected and confirmed cases)



By Outcome  
(suspected and confirmed)

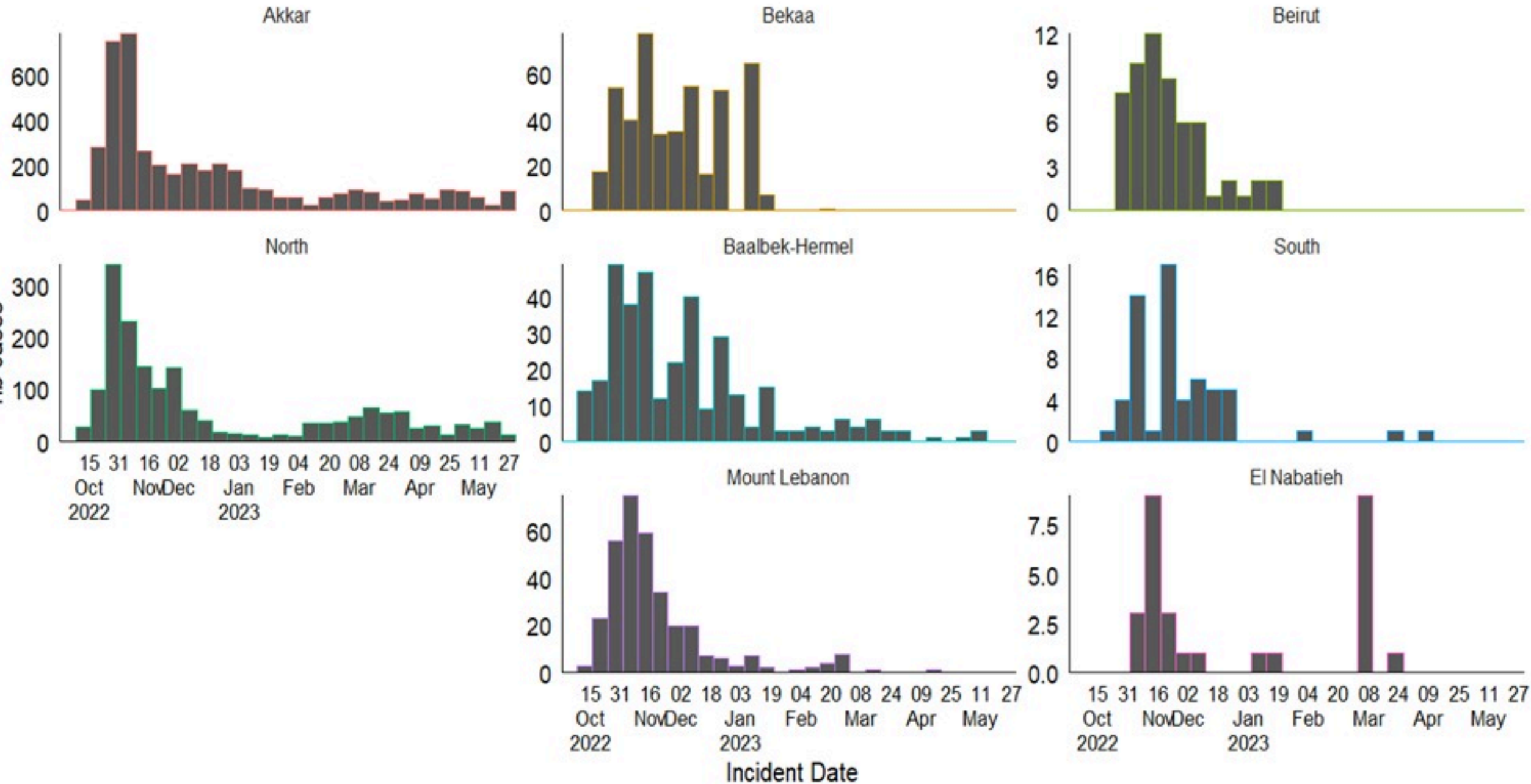




# Cholera Surveillance Report

## 29 May 2023

Epicurves by date of reporting by province  
(suspected and confirmed)

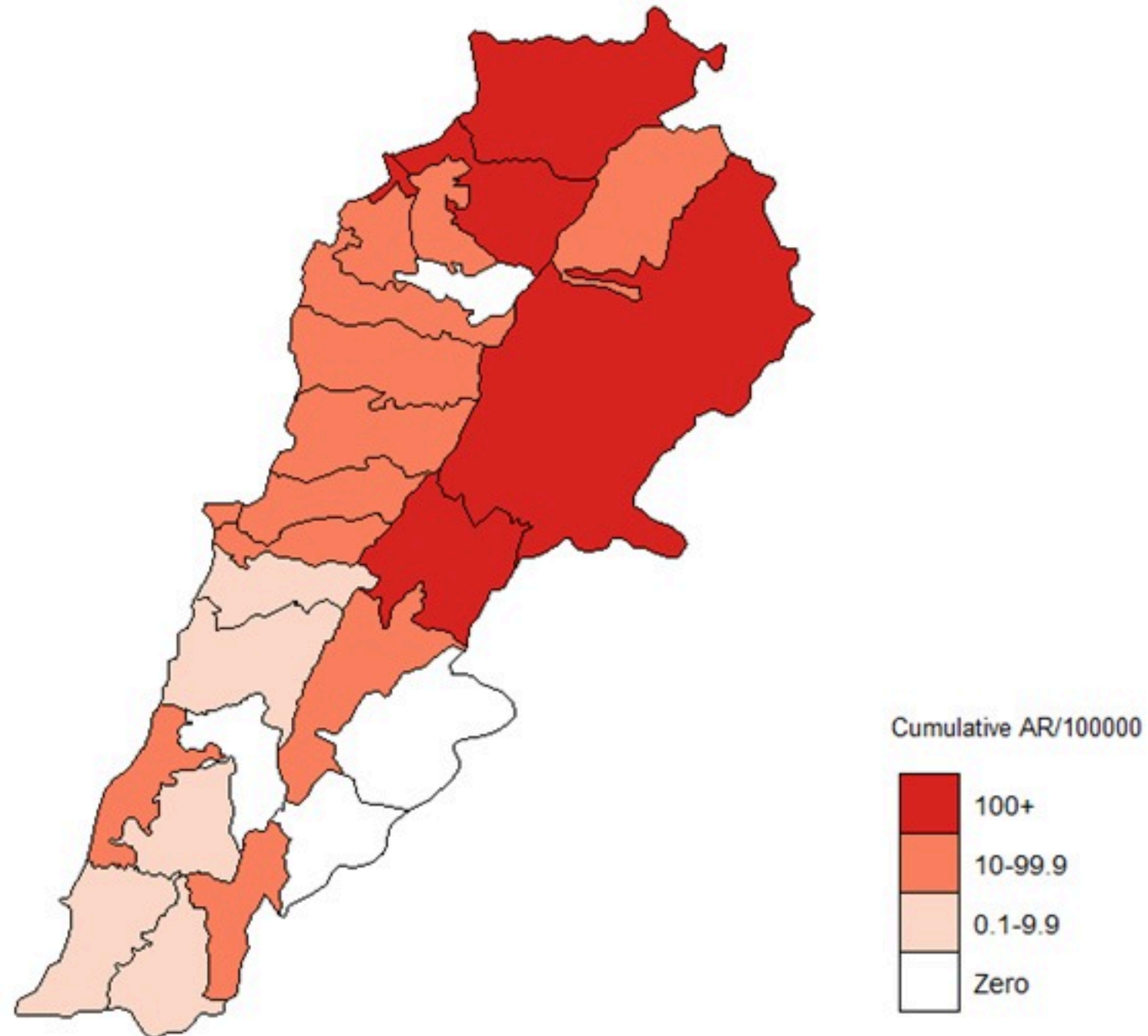


# Cholera Surveillance Update

## 29 May 2023

Cumulative Attack Rate per 100,000 (suspected and confirmed)

نسبة الحدوث التراكمية لكل مئة الف نسمة (الحالات المشتبهه والمثبتة)

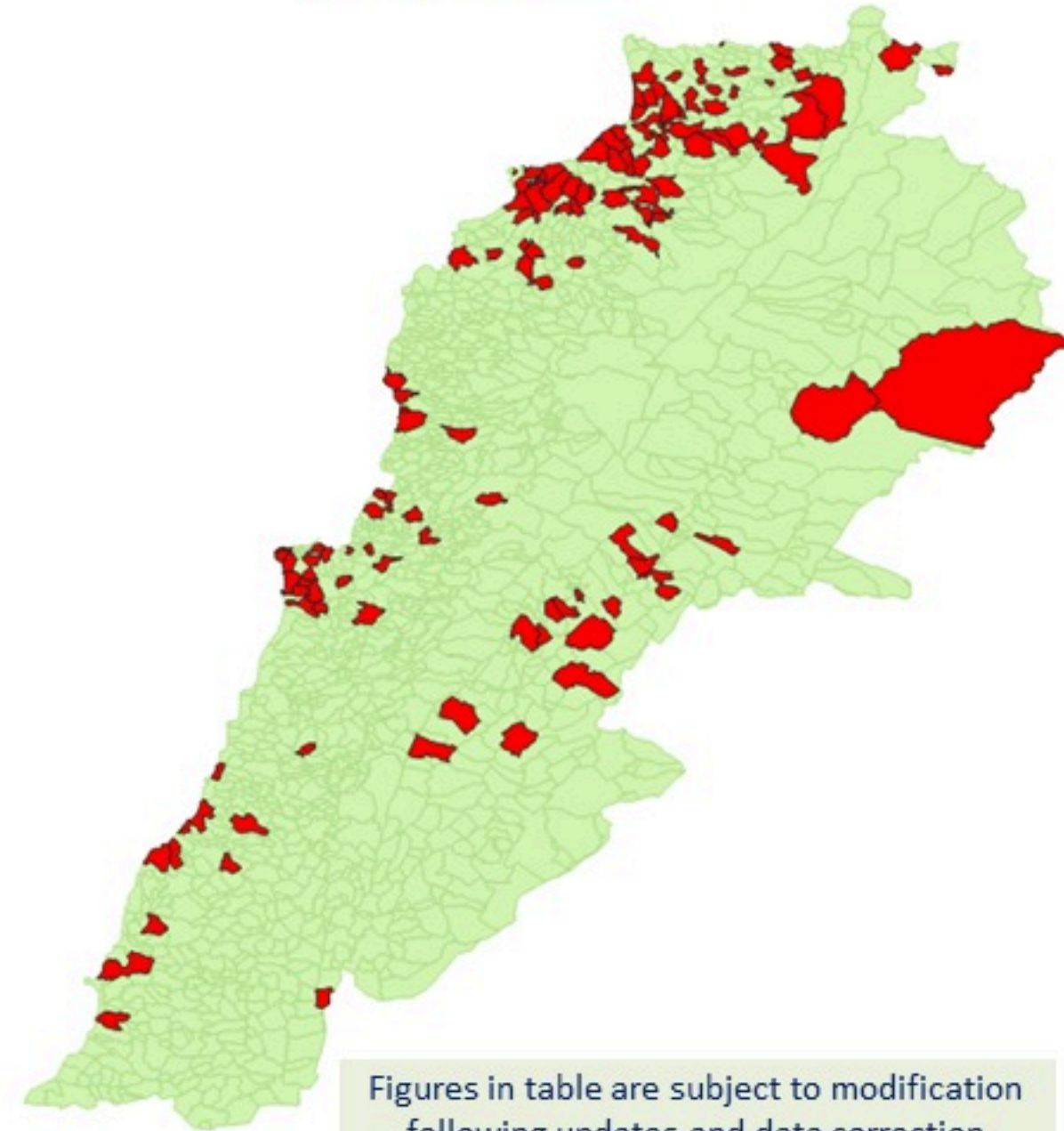




# Cholera Surveillance Update

## 29 May 2023

By locality (confirmed)  
حسب البلدة (المتبقة)



Figures in table are subject to modification following updates and data correction

Case	Locality	Cases	Case	Locality	Cases
1	Akkar Atika	1	1	Aintouna	1
2	Amayer/Duadi Khaled	1	2	Ballounh	1
3	Arqa / Marlayet Haddara	2	3	Bqajouta	7
4	Bebnine / Baddoua	16	4	Ghazir	2
5	Beit Hajj/Koucha/Khrebit Jindi	1	5	Jounieh Ghadir	4
6	Bergayel	1	6	Jounieh Sabra	4
7	Bezbina	1	7	Yahchouch	1
8	Birch	1	8	Zouk Mosbeh	3
9	Bqerzla	1	9	Aaba	1
10	Cheikh Ayache / Chir Hmairine	1	10	Aafidiq	1
11	Dahr Qambar /Hokr Gatteh	1	11	Bana	1
12	Dabadab	1	12	Baama	1
13	Dinbou	1	13	Dahr Ain / Ras Masqou	1
14	Fneydek	1	14	Rachdibbine	1
15	Halba	1	15	Kfar Aqa	1
16	Hayssa	1	16	Marjoun	1
17	Hoeuich	1	17	Motin	1
18	Jdeidat Qaytee	1	18	Biklaya	1
19	Kfar Harra	4	19	Broummana	1
20	Kfar Melki	1	20	Bsalim	1
21	Khane Hayat	1	21	Daruna/Borj Hammoud	2
22	Khirbet Char	1	22	Mansourieh	3
23	Kneisset Hnaldar	1	23	Zalqa	1
24	Kouachra	1	24	Miniyah Danieh	1
25	Koukikhat	1	25	Aadoua	1
26	Machha	1	26	Assoun	4
27	Majdala	1	27	Ain El Tineh	1
28	Memneaa	1	28	Bahsa	1
29	Mhamarah / Nahr Bared / Abdeh	22	29	Bakhawoun	4
30	Minlara	1	30	Bhanine / Zouk Bhanine	7
31	Mqyatea	1	31	Btarmat	6
32	Ouadi Jamous	11	32	Douniyya	1
33	Qaabrine / Tal Hayat	1	33	Kfar Chollane	2
34	Qbalyat	1	34	Kfar Habrou	1
35	Qlayat Akkar	1	35	Mokubta	2
36	Qobet Chamra	17	36	Miniyah	18
37	Rahbeh	1	37	Qualiyeh	1
38	Ransiyeh / Deir Dalloum	1	38	Qattine	3
39	Saadine	1	39	Rihanieh	35
40	Tell Abbas Charqui	1	40	Sir Daniyah	5
41	Tleil	1	41	Saida	1
42	Zouq Haddara	1	42	Aahqoun	1
43	Zouq Hosnieh	1	43	Bissatyyeh	4
44	Aley	1	44	Ghazieh	2
45	Hay Selloum/Chouifat	1	45	Khawayeb	3
46	Ain Roummaneh	1	46	Saida	1
47	Borj Brajneh	1	47	Sawland	1
48	Ghbayreh/Chiyah/Sabra	1	48	Sour	1
49	Hadath	1	49	Deir Qanoun Ain	4
50	Haret Hreik	1	50	Baddawi	16
51	Kfar Chima	1	51	Mina	7
52	Mrejjih	1	52	Qobbah	21
53	Arsal	27	53	Tripoli Bab Raml	1
54	Kfar Dabache	1	54	Tripoli Gardans	2
55	Khodr	1	55	Tripoli Haddadine	1
56	Temnine Faouqa	1	56	Tripoli Nouri	1
57	Temnine Tahta	1	57	Tripoli Souayya / Issaia	3
58	Younine	1	58	Tripoli Tabbaneh	21
59	Chikka	1	59	Tripoli Zaitoun	15
60	Achrafieh	1	60	West Beqaa	1
61	Ain Miralssch	1	61	Kamel Jaouz	1
62	Hamra	1	62	Kulaya	1
63	Mdsour / Mar Mikhael	1	63	Saghbine	1
64	Msaitbeh	1	64	Zahleh	2
65	Zaarouriyeh	1	65	Aali Nahri	2
66	Amchit	1	66	Bar Elias	2
67	Ehmej	1	67	Dalhameh	2
68	Fidar	1	68	Hazouh Mandra	1
69	Halate	1	69	Hawch Omara	7
70	Jbeil	1	70	Majdal Anjar	1
71	Mastita	1	71	Qob Elias	9
72			72	Raait	11
73			73	Saadnayel	11
74			74	Taalabaya	2
75			75	Zahleh Madaka	2
76			76	Zghorta	1
77			77	Aalma	1
78			78	Andeh	1
79			79	Kfar Dhaqous	2
80			80	Majdalya Zghorta	7
81			81	Miriata / Faour	3
82			82	Sebail	1
83			83	Zghorta	5