

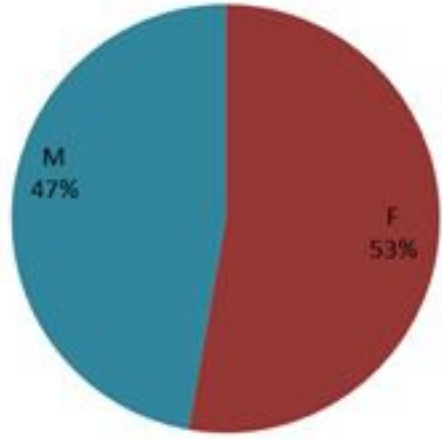
# ترصد الكوليرا في لبنان 6 كانون الاول 2022

الجمهورية اللبنانية  
وزارة الصحة العامة  
برنامج الترصد الوبائي

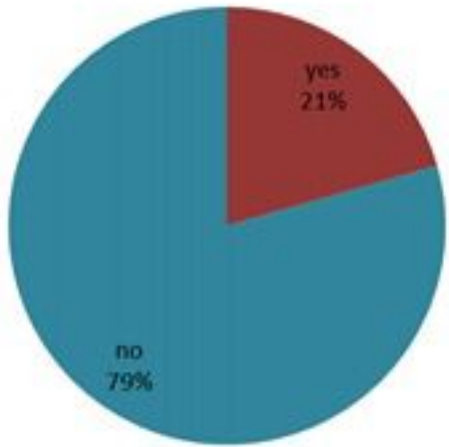


## الخطوط الساخنة

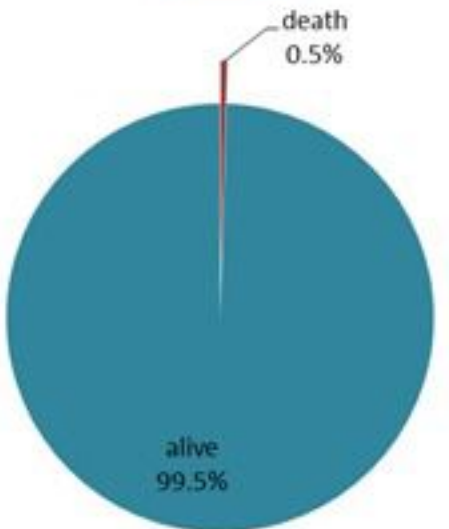
1760 (الصليب الأحمر)  
1787 (وزارة الصحة)



حسب الجنس  
(المشبهة والمثبتة)



حسب الاستشفاء  
(المشبهة والمثبتة)



حسب تطور الحالة  
(المشبهة والمثبتة)

الوفيات (المثبتة)		الحالات المثبتة		كافة الحالات المشبهة والمثبتة	
التراكمي	الجديدة (آخر 24 ساعة)	التراكمي	الجديدة (آخر 24 ساعة)	التراكمي	الجديدة (آخر 24 ساعة)
23	1	653	1	4912	84

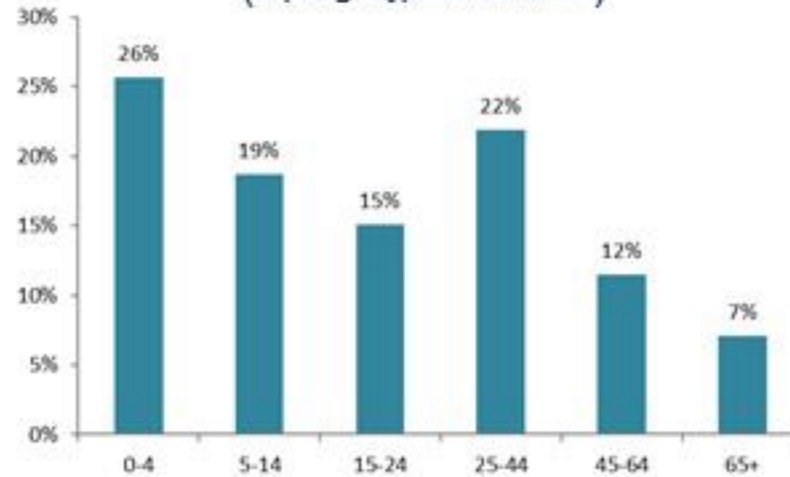
حسب تاريخ الإبلاغ  
(للحالات المثبتة والمثبتة)



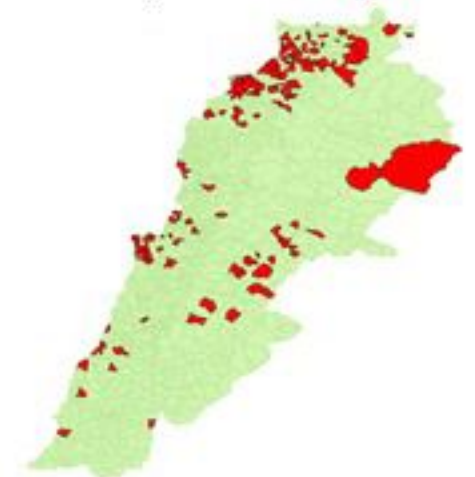
استعمال الاسرة الاستشفائية  
(للحالات المثبتة والمثبتة)



حسب الفئة العمرية  
(للحالات المشبهة والمثبتة)



حسب البلدة  
(للحالات المثبتة)



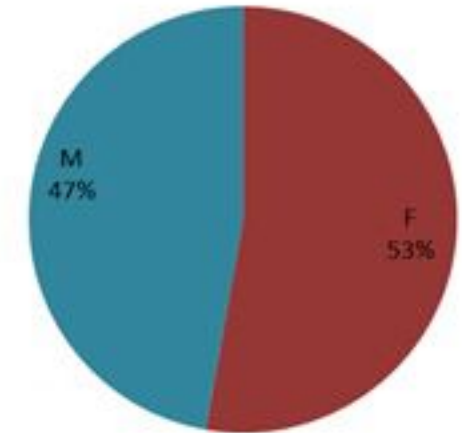
# Cholera Surveillance Report

## 6 Dec 2022

**Call Centers**  
 1760 (Red Cross)  
 1787 (MOPH)

All cases (suspected and confirmed)		Confirmed Cases		Deaths (confirmed)	
New (past 24 h)	Cumulative	New (past 24 h)	Cumulative	New	Cumulative
<b>84</b>	<b>4912</b>	<b>1</b>	<b>653</b>	<b>1</b>	<b>23</b>

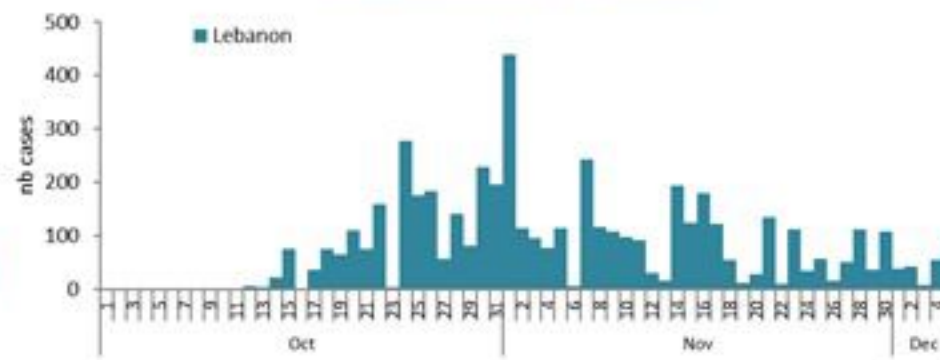
By Sex  
(suspected and confirmed)



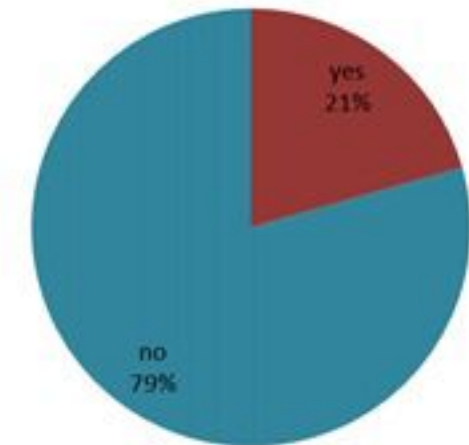
Occupied hospital beds  
(suspected and confirmed)



By date of report  
(suspected and confirmed)



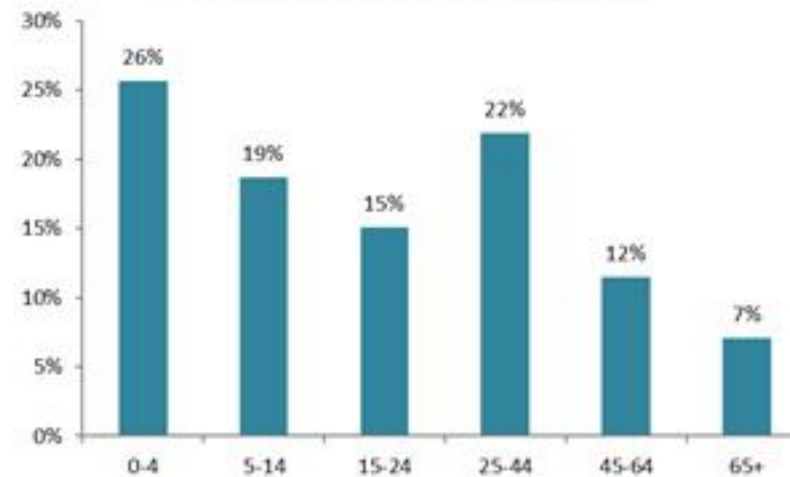
By Hospital Admission  
(suspected and confirmed)



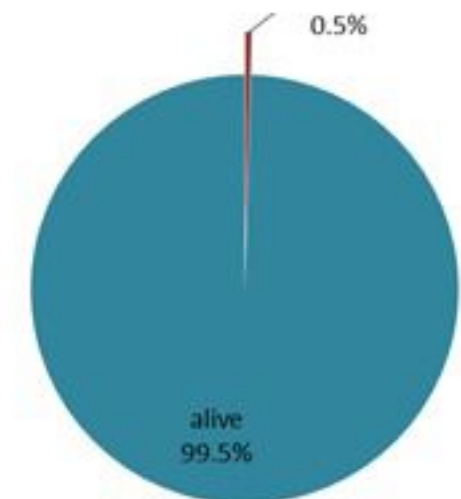
By locality (confirmed cases)



By age group  
(suspected and confirmed cases)



By Outcome  
(suspected and confirmed)

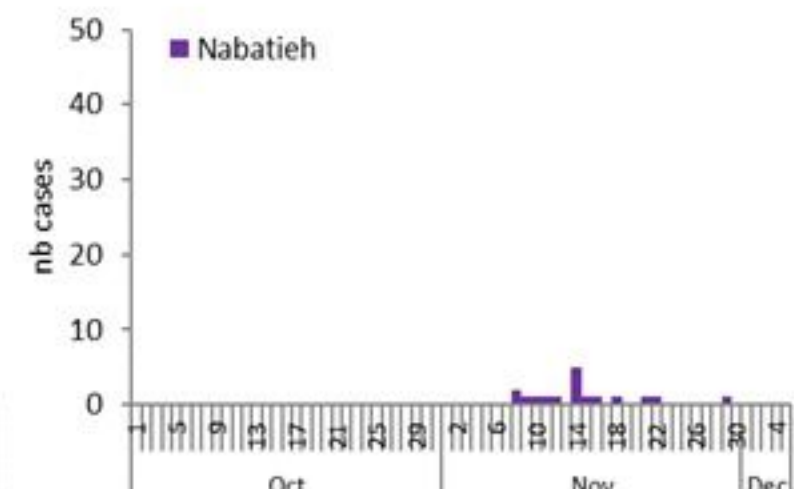
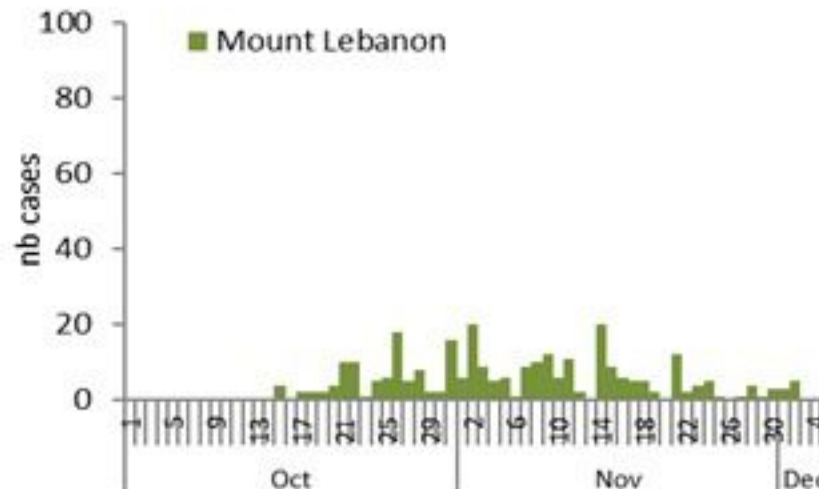
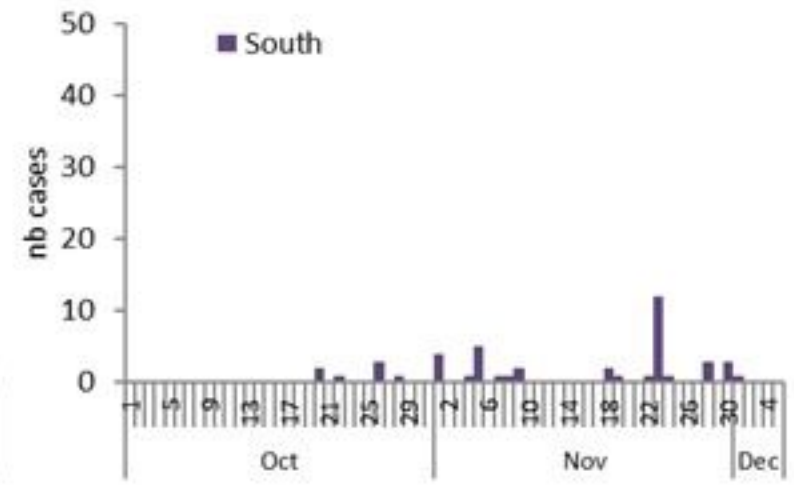
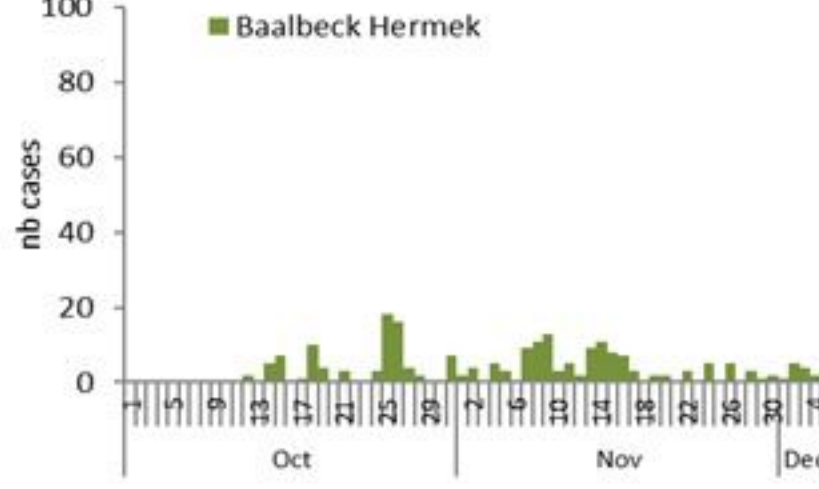
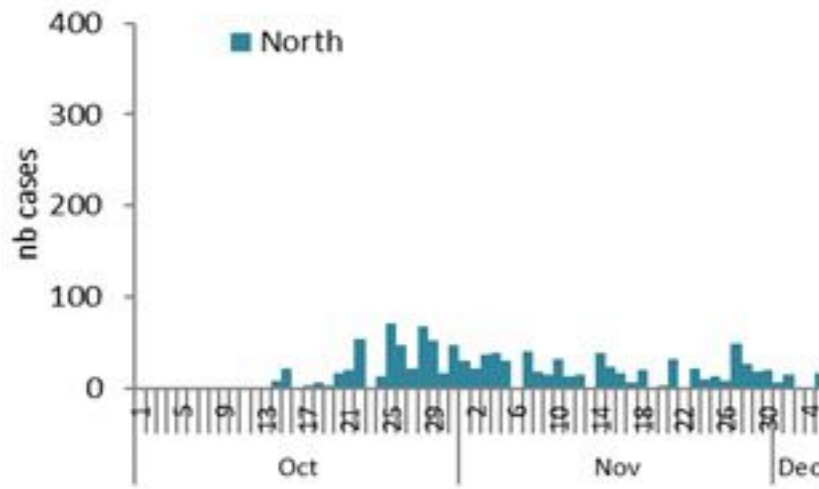
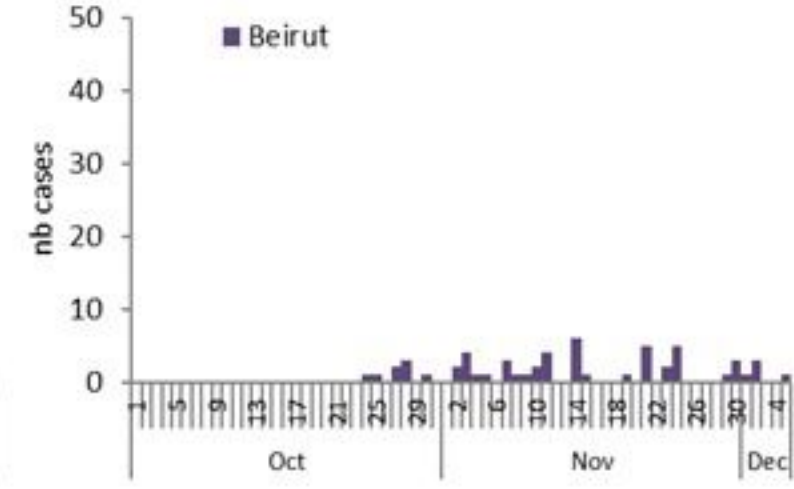
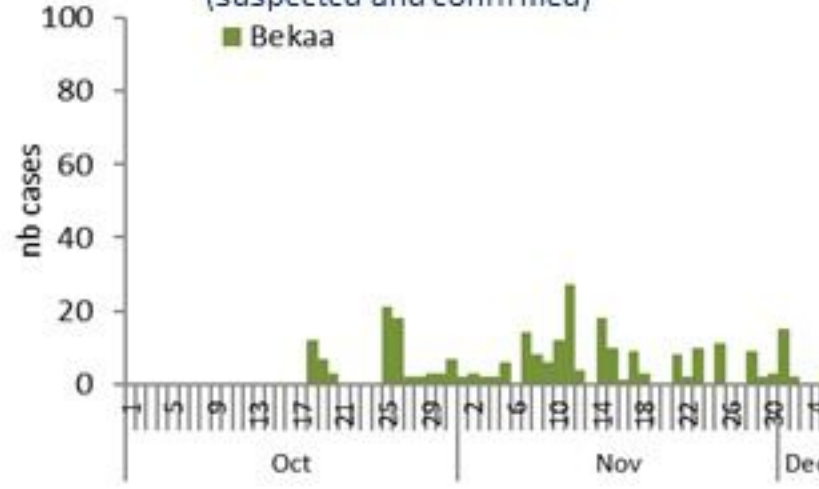
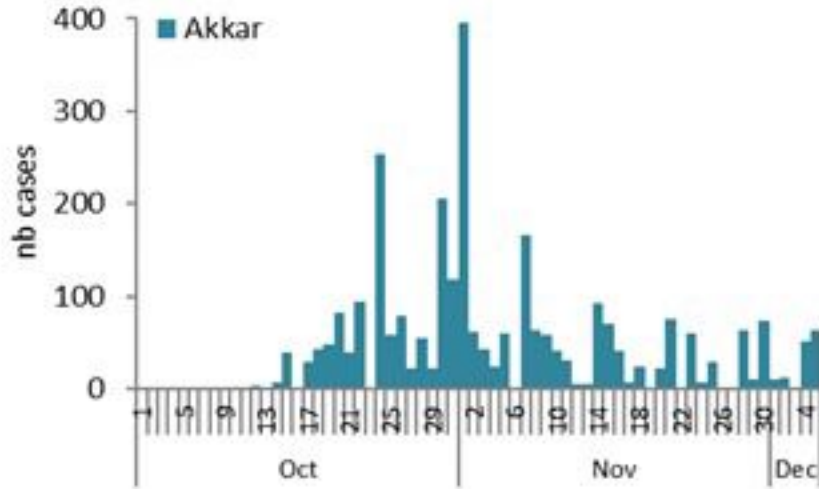


# Cholera Surveillance Report

## 6 Dec 2022

Epicurves by date of reporting by province

(suspected and confirmed)



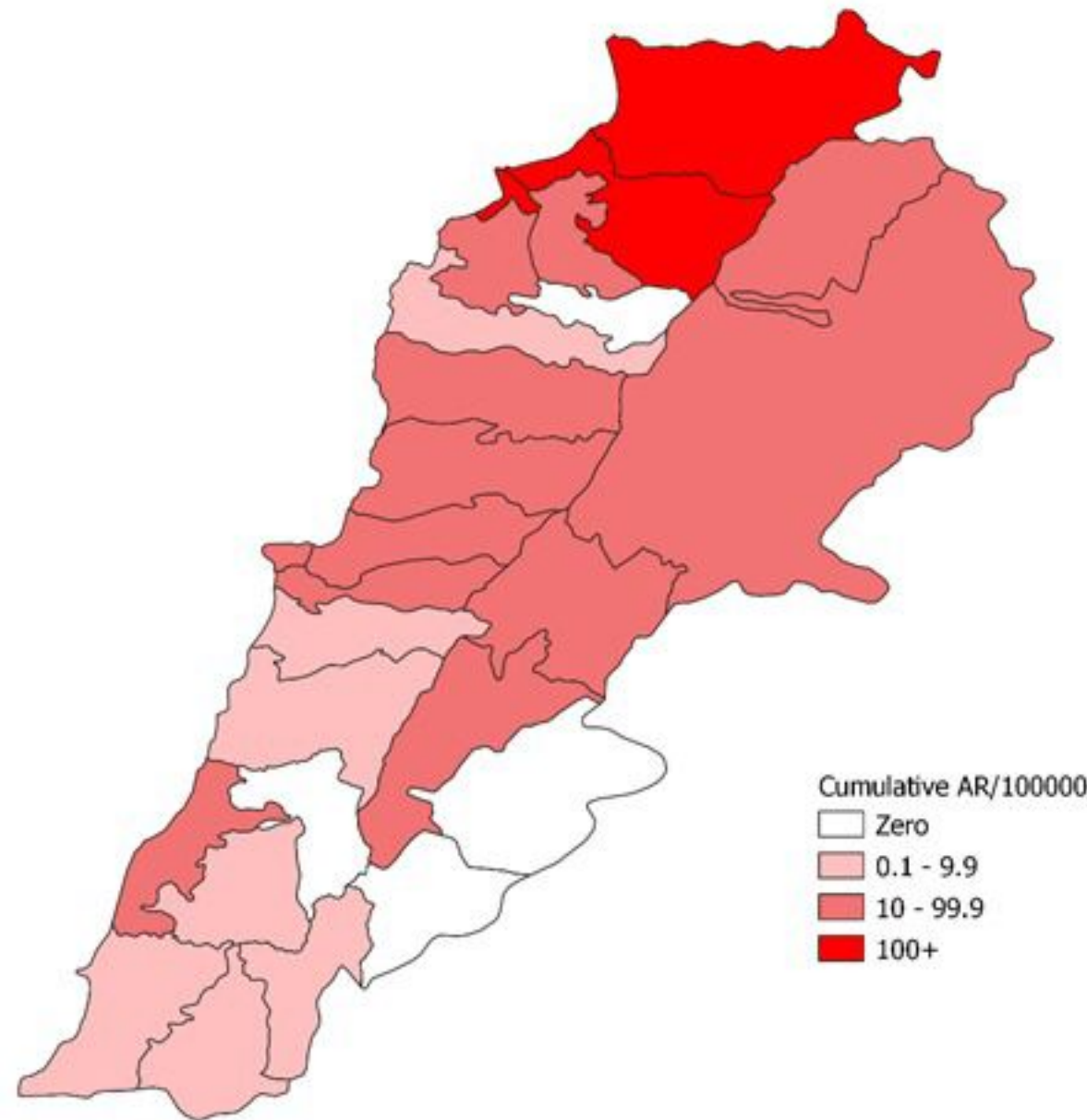
# Cholera Surveillance Update

6 Dec 2022

4

Cumulative Attack Rate per 100,000 (suspected and confirmed)

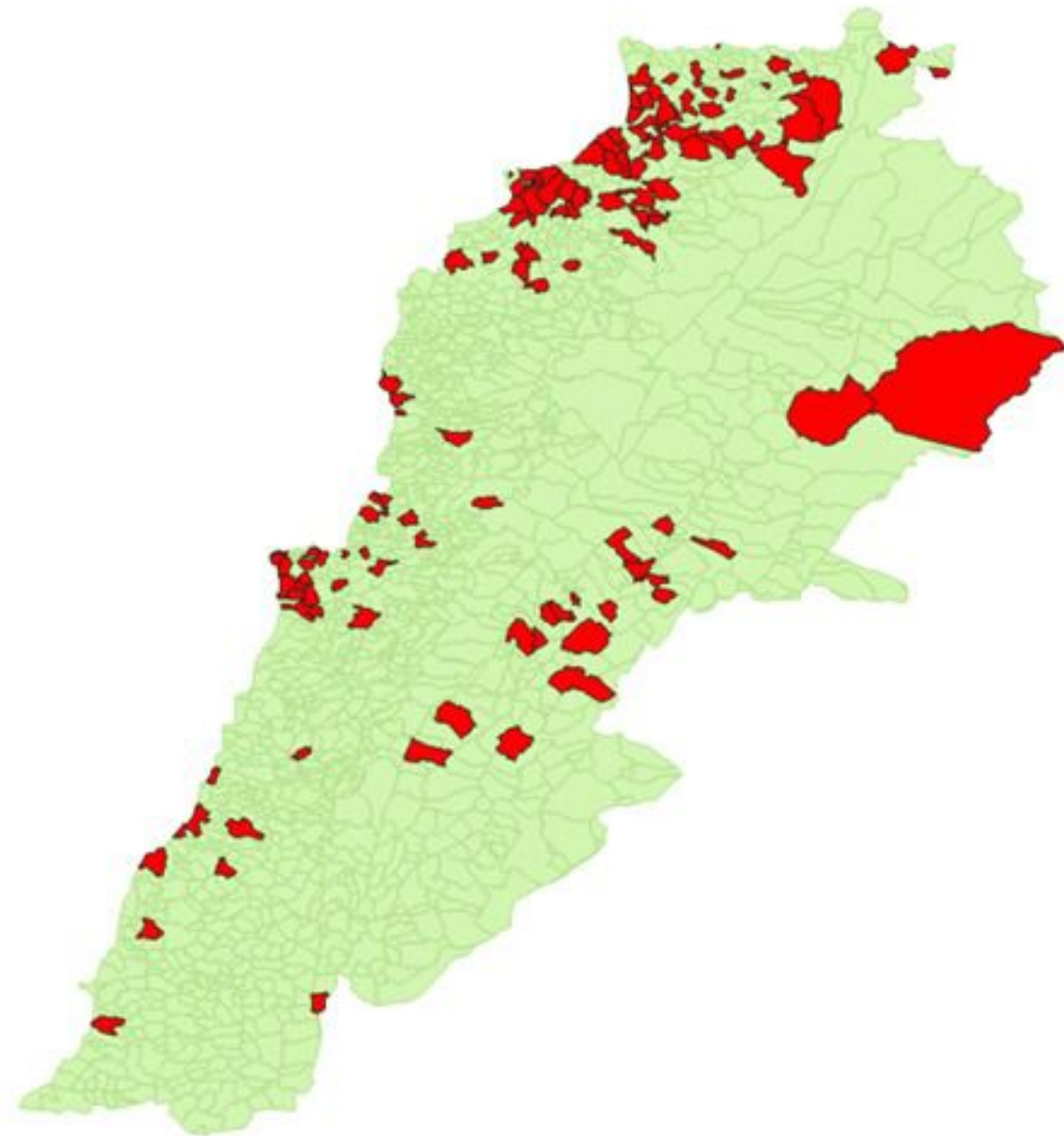
نسبة الحدوث التراكمية لكل مئة ألف نسمة (الحالات المشتبهية والمثبتة)



# Cholera Surveillance Update

## 6 Dec 2022

By locality (confirmed)  
حسب البلدة (المتبئة)



Figures in table are subject to modification following updates and data correction

Caza	Locality	cases	Caza	Locality	cases		
Akkar	Akkar Atika	1	Ksarwan	Aintoura	1		
	Amayer/Duadi Khaled	1		Bailounch	1		
	Arqa / Marlayet Haddara	1		Bqatouta	7		
	Bebrine / Baddoua	159		Ghazir	2		
	Beit Hajj/Koucha/Khreibit Jindi	1		Jounieh Ghadir	4		
	Birqayel	1		Jounieh Sarba	4		
	Bezbina	1		Yahchouch	1		
	Bireh	1		Zouk Mosbeh	3		
	Bqerzia	1		Koura	Aaba	1	
	Cheikh Ayache / Chir Hmairine	1			Aafsdiq	1	
	Dahr Qambar /Hokr Qatteh	1			Barsa	1	
	Dinbou	1	Bsarma		1		
	Fneydek	1	Dahr Ain / Ras Masqua		1		
	Halba	1	Rechdibbine		1		
	Hayssa	1	Kfar Aqa		1		
	Hoculch	1	Marjeoun Metn	Aadaysch	1		
	Jdeidat Qaytee	1		Biktaya	1		
	Kfar Harra	4		Broummana	1		
	Kfar Melki	1		Bsalim	1		
	Khane Hayat	1		Daoura/Borj Hammoud	2		
	Khirbet Char	2		Mansourich	3		
	Kneisset Hnaider	1		Zalqa	1		
	Kouchra	1		Minieh Danieh	Aadoua	1	
	Koukhat	1			Assoun	4	
	Machha	1			Ain El Tineh	1	
	Majdala	1	Bahsa		1		
	Memneaa	1	Bakhaaoun		4		
	Mhamarah / Nahr Bared / Abdeh	22	Bhanine / Zouk Bhanine		7		
	Minara	1	Btermaz		6		
	Mqyatea	1	Douraiya		1		
	Ouadi Jamous	11	Kfar Chellane		2		
	Qabrine / Tal Hayat	1	Kfar Habou		1		
	Qbalyat	1	Merkebta		2		
	Qlayat Akkar	1	Minieh		18		
	Qobet Chamra	17	Ouatlyeh		1		
	Rahbeh	1	Qattine		3		
	Ransiyeh / Deir Dalloum	1	Rihanich		35		
	Saadine	4	Sir Dannieh		5		
	Tell Abbas Charqui	1	Saïda		Aanqoun	1	
	Tleil	1			Ghazieh	2	
	Zouq Haddara	1		Kharayeb	3		
	Zouq Hounieh	1		Saïda	1		
				Sarafand	1		
	Aley	Aley	1	Sour	Deir Qanoun Ain	4	
		Hay Selloum/Choueitaf	1		Baddawi	16	
	Baabda	Ain Roummaneh	1		Tripoli	Mina	7
		Borj Brajneh	1			Qobbah	21
Ghbayreh/Chiyah/Sabra		1	Tripoli Bab Raml	1			
Hadath		1	Tripoli Gardens	1			
Haret Hreik		1	Tripoli Haddadine	1			
Kfar Chima		1	Tripoli Nouri	1			
Mreijih		1	Tripoli Souayqa / Jisrain	3			
Baalbeck	Arsal	27	Tripoli Tabbaneh	20			
	Kfar Dabache	1	Tripoli Zeitoun	15			
	Khodr	1	West Beqaa	Kamel laouz		1	
	Temnine Faouqa	1		Kefraya	1		
	Temnine Tahta	1		Saghbine	1		
Younine	1	Zahleh	Aali Nahri	2			
Batroun	Chikka		1	Bar Elias	2		
	Beirut		Achrafieh	1	Dalhamieh	1	
			Ain Mraissseh	1	Haouch Mandra	1	
			Hamma	1	Hawch Omara	7	
			Mdaouar / Mar Mikhael	1	Majdal Anjar	1	
Msaïtbeh			1	Qob Elias	9		
Chouf	Zaarouriyeh		1	Raait	11		
	Jbeil		Amchit	1	Saadnayel	11	
Ehmej			1	Taalabaya	2		
Jbeil			1	Zahleh Maalaka	2		
Mastita		4	Zghorta	Aalima	1		
				Ardeh	1		
		Kfar Dlaqous		2			
		Mejdalya Zghorta		6			
		Miriata / Raour		3			
		Sebaal		1			
		Zghorta	4				

# Cholera weekly incidence rate/100,000

