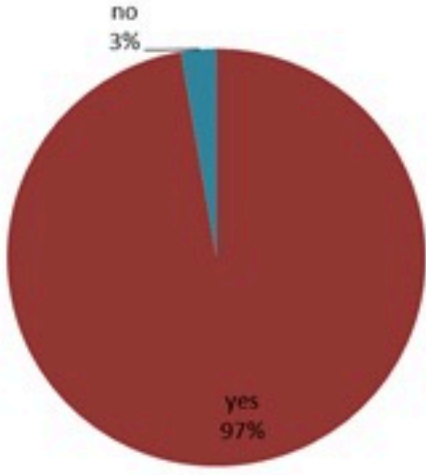
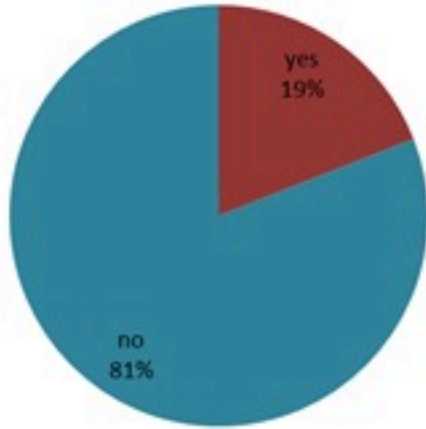


الخطوط الساخنة

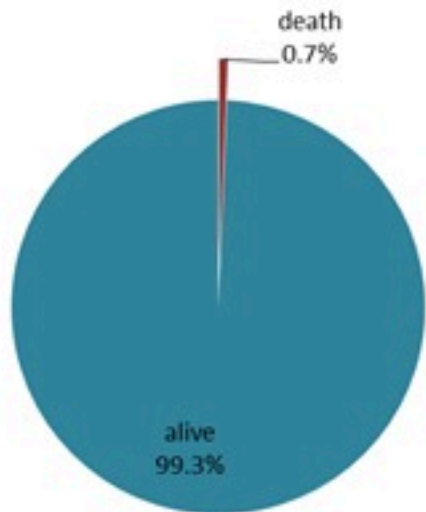
1760 (الصليب الأحمر)
1787 (وزارة الصحة)



حسب ظهور
العوارض
(المشبهة والمثبتة)



حسب الاستشفاء:
(المشبهة والمثبتة)



حسب تطور
الحالة
(المشبهة والمثبتة)

ترصد الكوليرا في لبنان 07 تشرين الثاني 2022

الجمهورية اللبنانية
وزارة الصحة العامة
برنامج الترصد الوبائي



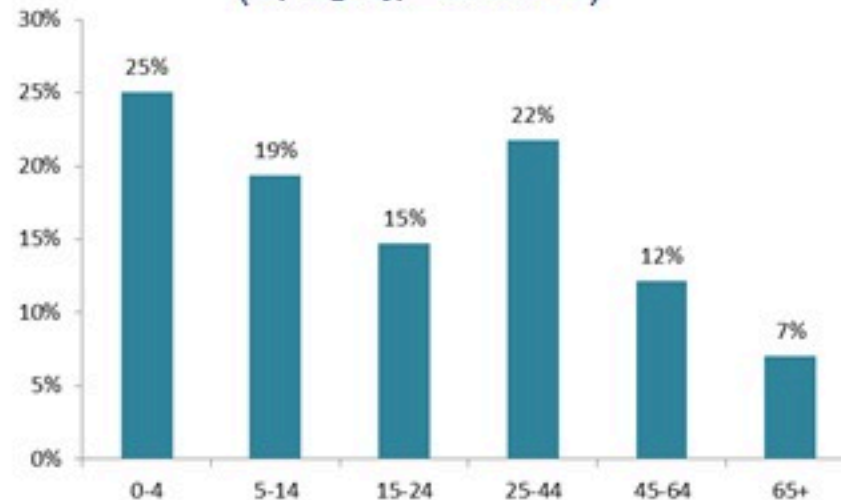
الوفيات (المثبتة)		الحالات المثبتة		كافة الحالات المثبتة والمشبهاة	
التراكمي	الجديدة (آخر 24 ساعة)	التراكمي	الجديدة (آخر 24 ساعة)	التراكمي	الجديدة (آخر 24 ساعة)
18	0	448	12	2722	13

حسب تاريخ الإبلاغ
(للحالات المثبتة والمشبهاة)



عدد الاسرة
المستعملة
(للحالات المشبهاة
والمثبتة)
93

حسب الفئة العمرية
(للحالات المشبهاة والمثبتة)



حسب البلدة
(للحالات المثبتة)



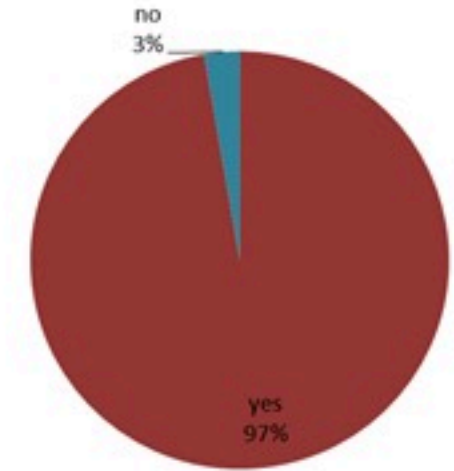
Cholera Surveillance Report

07 Nov 2022

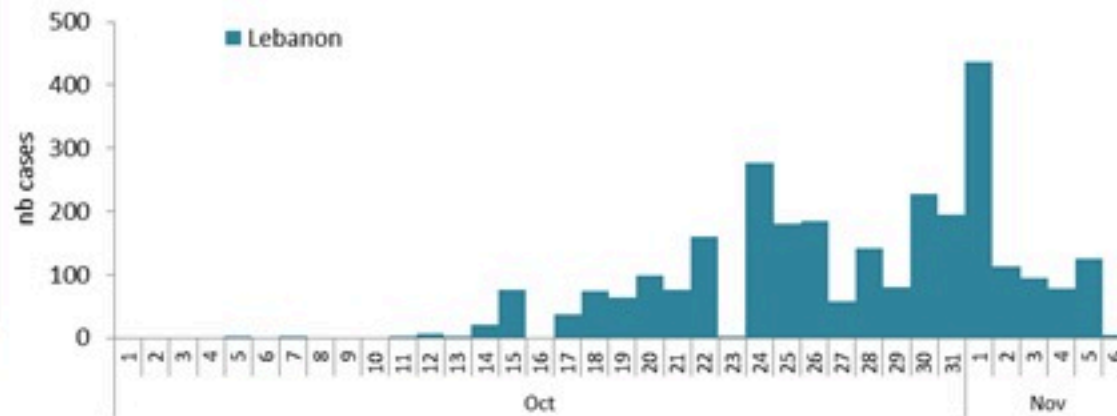
Call Centers
 1760 (Red Cross)
 1787 (MOPH)

All cases (suspected and confirmed)		Confirmed Cases		Deaths (confirmed)	
New (past 24 h)	Cumulative	New (past 24 h)	Cumulative	New	Cumulative
13	2722	12	448	0	18

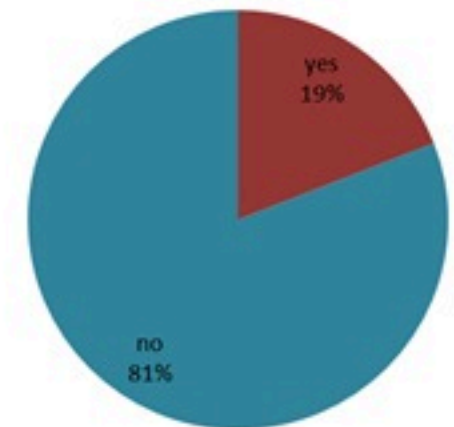
By Presence of Illness
(suspected and confirmed)



By date of report
(suspected and confirmed)



By Hospital Admission
(suspected and confirmed)

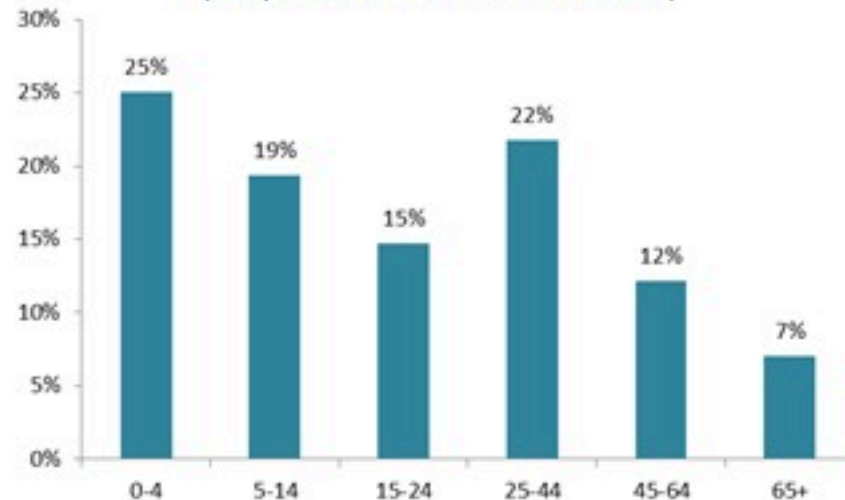


**Total occupied beds
(suspected/confirmed)**
93

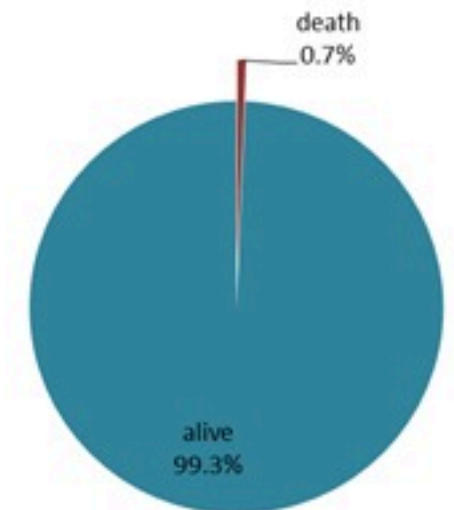
By locality (confirmed cases)



By age group
(suspected and confirmed cases)



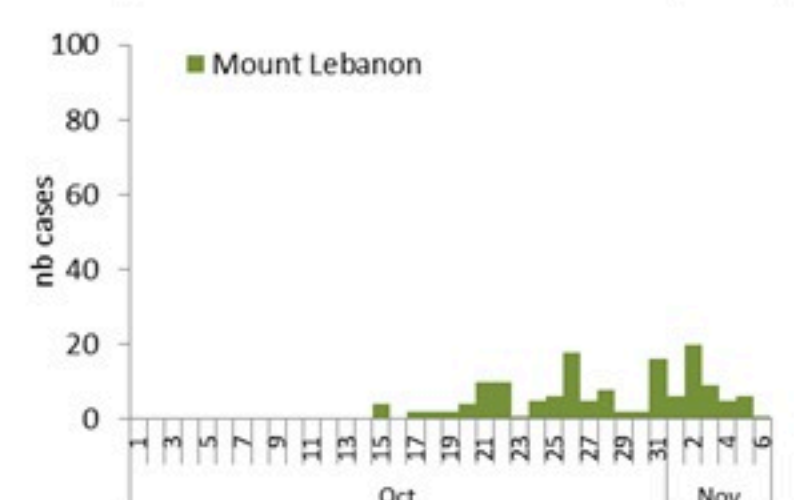
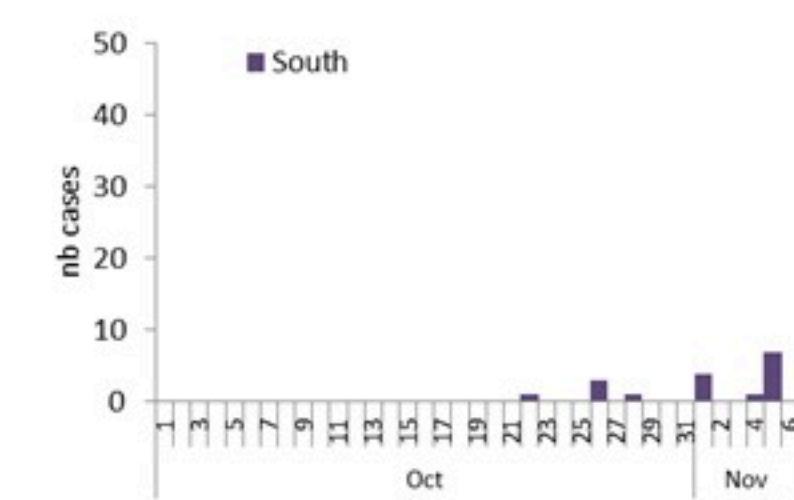
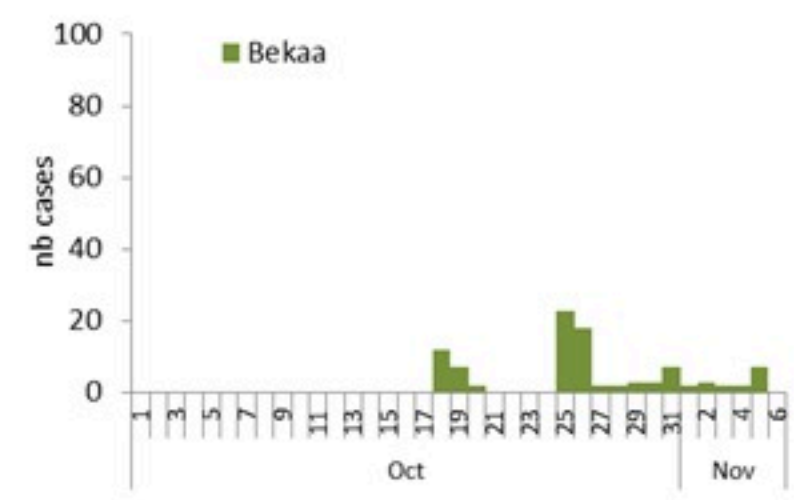
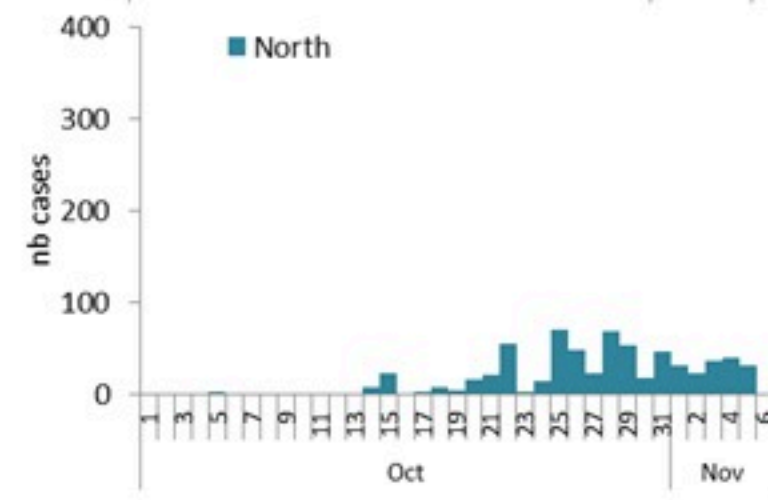
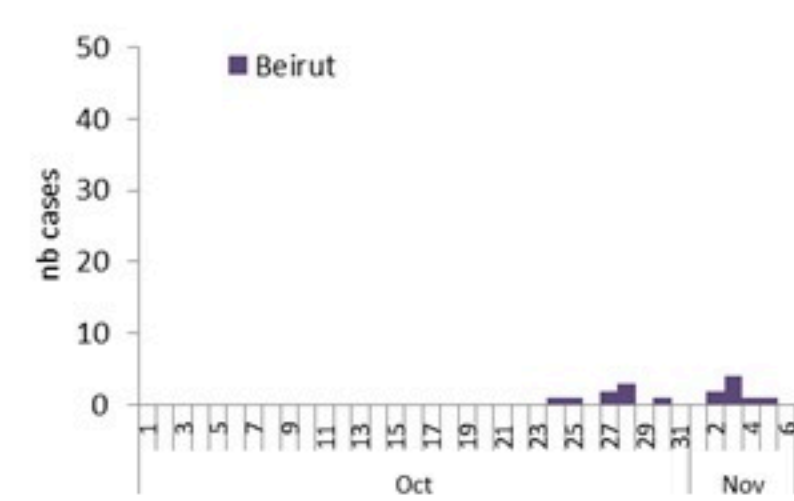
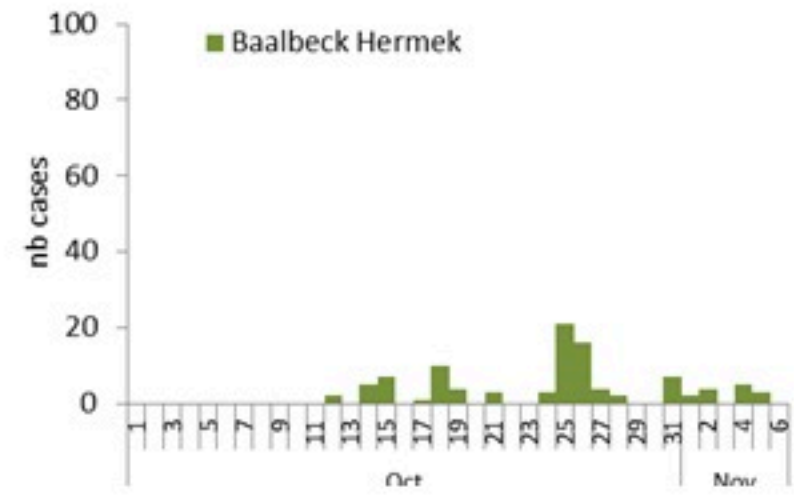
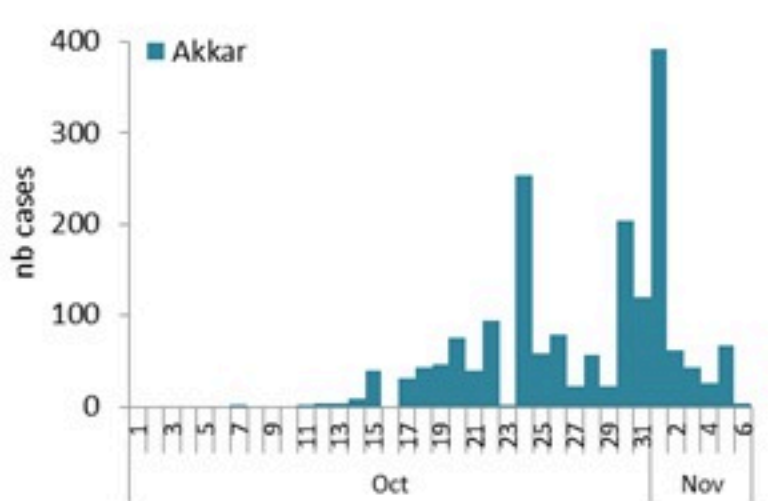
By Outcome
(suspected and confirmed)



Cholera Surveillance Report

07 Nov 2022

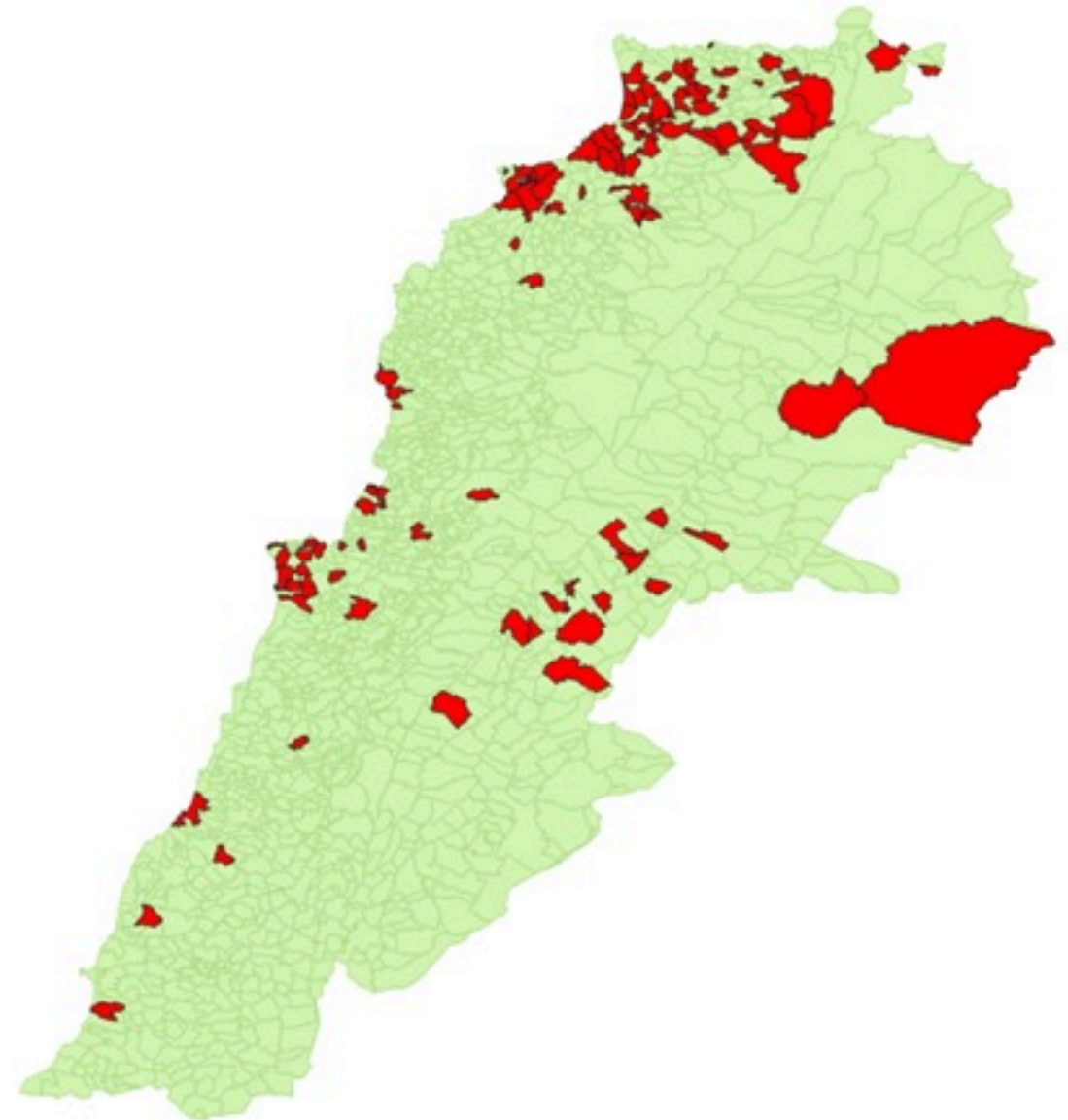
Epicurves by date of reporting by province
(suspected and confirmed)



Cholera Surveillance Update

07 Nov 2022

By locality (confirmed)
حسب البلدة (المتبنة)



Caza	Locality	cases	Caza	Locality	cases	
Akkar	Akkar Atika	1	Chouf	Zaarouriyeh	1	
	Amayer/Ouadi Khaled	1	Jbeil	Amchit	1	
	Arqa / Marlayet Haddara	2		Jbeil	1	
	Bebnine / Baddoua	128		Mastita	1	
	Beit Hajj/Koucha/Khreibit Jindi	1	Kesrwan	Aintoura	1	
	Berqayel	4		Bqaatouta	6	
	Bezbina	1		Jounieh Ghadir	3	
	Bireh	2		Jounieh Sarba	4	
	Bqerzla	1		Zouk Mosbeh	1	
	Cheikh Ayache / Chir Hmairine	3	Koura	Aaba	1	
	Dahr Qambar /Hokr Qatteh	2		Dahr Ain / Ras Masqua	1	
	Fneydek	2		Rechdibbine	1	
	Halba	1	Metn	Bikfaya	1	
	Hayssa	1		Bsalim	1	
	Hoeuich	3		Daoura/Borj Hammoud	2	
	Jdeidat Qaytee	2		Mansourieh	2	
	Kfar Harra	4		Zalqa	1	
	Kfar Melki	1	Minieh Danieh	Aadoua	1	
	Khirbet Char	1		Assoun	5	
	Kneisset Hnaider	1		Bakhaaoun	3	
	Kouachra	1		Bhanine / Zouk Bhanine	2	
	Koueikhat	2		Kfar Chellane	1	
	Machha	2		Merkebta	2	
	Majdala	2		Minieh	10	
	Memneaa	1		Qattine	2	
	Mhamarah / Nahr Bared / Abdeh	11		Rihanieh	33	
	Miniara	3		Sir Dannieh	1	
	Mqyatea	1	Nabatieh	Zafta	1	
	Ouadi Jamous	4	Saida	Ghazieh	1	
	Qaabrine / Tal Hayat	7		Kharayeb	3	
	Qbaiyat	1	Sour	Deir Qanoun Ain	4	
	Qlayat Akkar	2		Baddawi	6	
	Qobet Chamra	11		Mina	1	
	Rahbeh	1		Qobbah	10	
	Ransiyeh / Deir Dalloum	1		Tripoli Gardens	1	
	Saadine	4		Tripoli Haddadine	1	
	Tell Abbas Charqui	2		Tripoli Nouri	1	
	Tieil	1		Tripoli Souayqa / Jisrain	3	
	Zouq Haddara	1		Tripoli Tabbaneh	5	
	Zouq Hosnieh	3		Tripoli Zeitoun	2	
	Aley	Aley	1	West Beqaa	Kefraya	1
		Hay Selloum/Choueifat	1	Zahleh	Bar Elias	1
	Baabda	Borj Brajneh	3		Dalhamieh	1
		Ghbayreh/Chiyah	1		Haouch Mandra	1
		Hadath	1		Hawch Omara	7
	Baalbeck	Arsal	24		Majdal Anjar	1
		Kfar Dabache	1		Qob Elias	9
Khodr		1		Raaït	8	
Temnine Faouqa		1		Saadnayel	11	
Temnine Tahta		8		Zahleh Maalaka	1	
Younine		1	Zghorta	Mejdalya Zghorta	1	
Beirut	Achrafieh	2		Miriata	4	
	Ain Mraïsseh	1		Tallet Zghorta	1	
	Mdaouar / Mar Mikhael	1		Zghorta	2	
	Msaitbeh	1				

Figures in table are subject to modification following updates and data correction